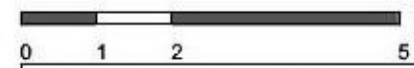
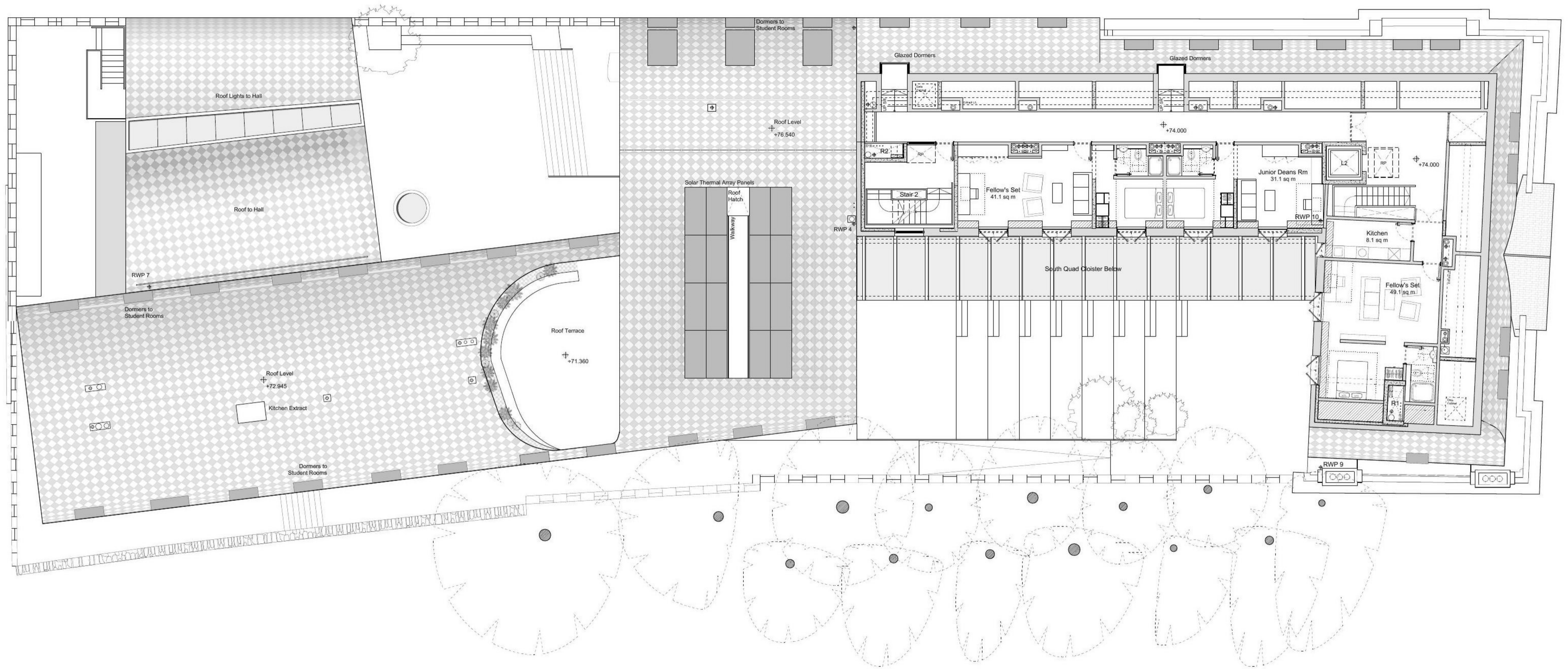


# SUPERSEDED



Revision	Date	Notes
B	08/01/13	Hall width increased, Updated to Stage D information
C	15/02/13	Amended to draft planning submission.
D	25/02/13	Change Control - Fourth Floor Layouts Amended
E	18/03/13	Detailed Planning Submission
F	25/03/13	Detailed Planning Submission

**Notes**

**Key Plan**

1. Do not scale drawings. All dimensions to be checked on site. Errors to be reported to architect. To be read in conjunction with all relevant architects services and engineers drawings.

2. Contractors, sub-contractors and suppliers to verify any critical dimensions on site prior to fabrication of any building element. Any discrepancies to be reported to the architect.

3. This drawing to be read in conjunction with all relevant specifications, engineers and specialists consultancies information and any discrepancies reported prior to installation.



<b>Project</b>	: EXETER COLLEGE WALTON STREET QUAD
<b>Title</b>	: PROPOSED FOURTH FLOOR PLAN
<b>Client</b>	: EXETER COLLEGE
<b>Scale</b>	: A3 - 1:200 : A1 - 1:100
<b>Date</b>	: 18.03.13
<b>Drawing</b>	: 2344_A109