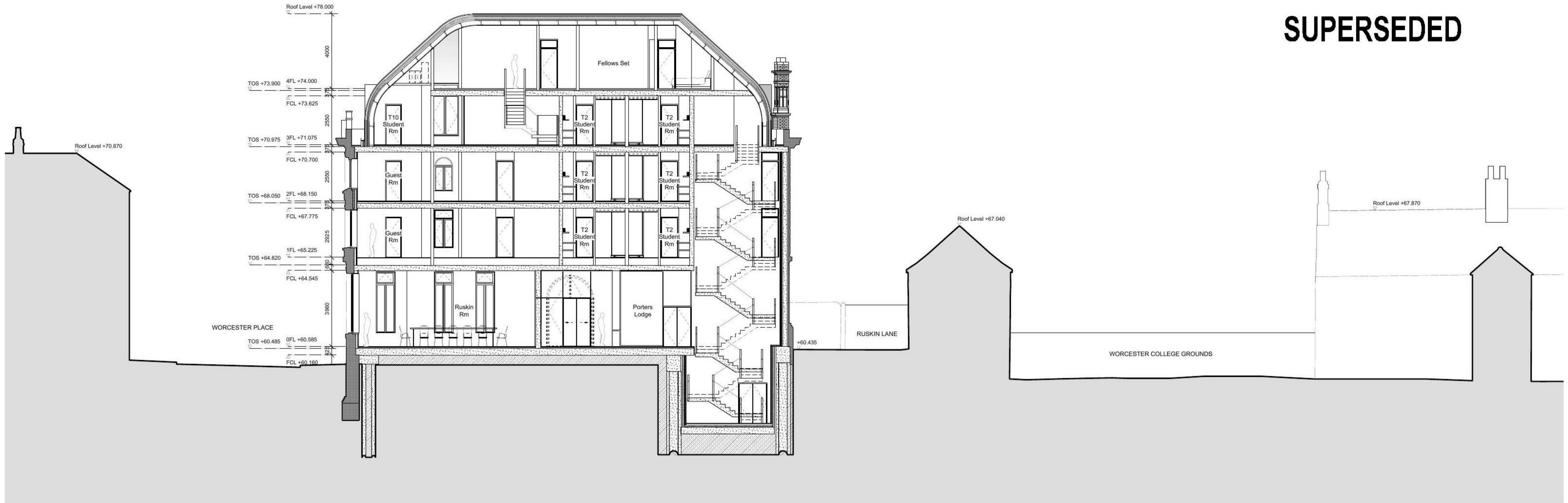


# SUPERSEDED



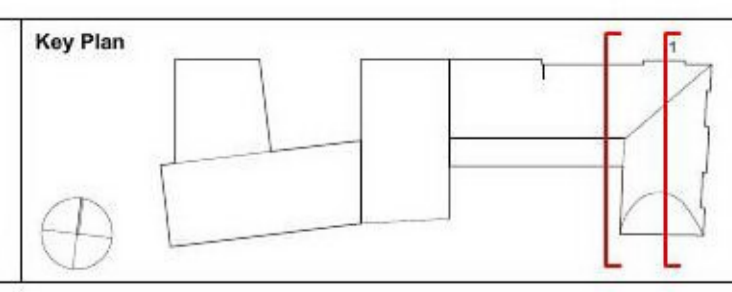
1 CROSS SECTION 1



2 CROSS SECTION 2

Revision	Date	Notes
A	30/11/12	Stage D GA Sections
B	14/12/12	Raised Windows up 450mm
C	15/02/13	Amended to draft planning submission.
D	18/03/13	Detailed Planning Submission

- Notes**
1. Bath Stone
  2. Brick
  3. Composite Double Glazed Windows with 200mm Reveals
  4. Frameless Fixed Glazing
  5. PPC Aluminium Cappings
  6. PPC Aluminium Gutter Detail
  7. Rimex Stainless Steel Roof Tiles
  8. PPC Stainless Steel Ventilation Grill
  9. PPC Aluminium Panel
  10. Stainless Steel Window System with Door
  11. Aluminium Framed Glazing
  12. Aluminium Framed Glazed Door
  13. Metal Gate
  14. Recessed Solar Thermal Array Panels
  15. Existing Retained Facade
  16. Oak Gate with Inset Door
  17. Anodized Aluminium Cladding Reveal
  18. Double Glazed Dormer
  19. Glass Balustrade
  20. Frameless Glazing between Timber Fins



1. Do not scale drawings. All dimensions to be checked on site. Errors to be reported to architect. To be read in conjunction with all relevant architects services and engineers drawings.
2. Contractors, sub-contractors and suppliers to verify any critical dimensions on site prior to fabrication of any building element. Any discrepancies to be reported to the architect.
3. This drawing to be read in conjunction with all relevant specifications, engineers and specialists consultancies information and any discrepancies reported prior to installation.



<b>Project</b>	: EXETER COLLEGE WALTON STREET QUAD
<b>Title</b>	: PROPOSED SECTION 01 & 02
<b>Client</b>	: EXETER COLLEGE
<b>Scale</b>	: A3 - 1:200 : A1 - 1:100
<b>Date</b>	: 18.03.13
<b>Drawing</b>	: 2344_A301