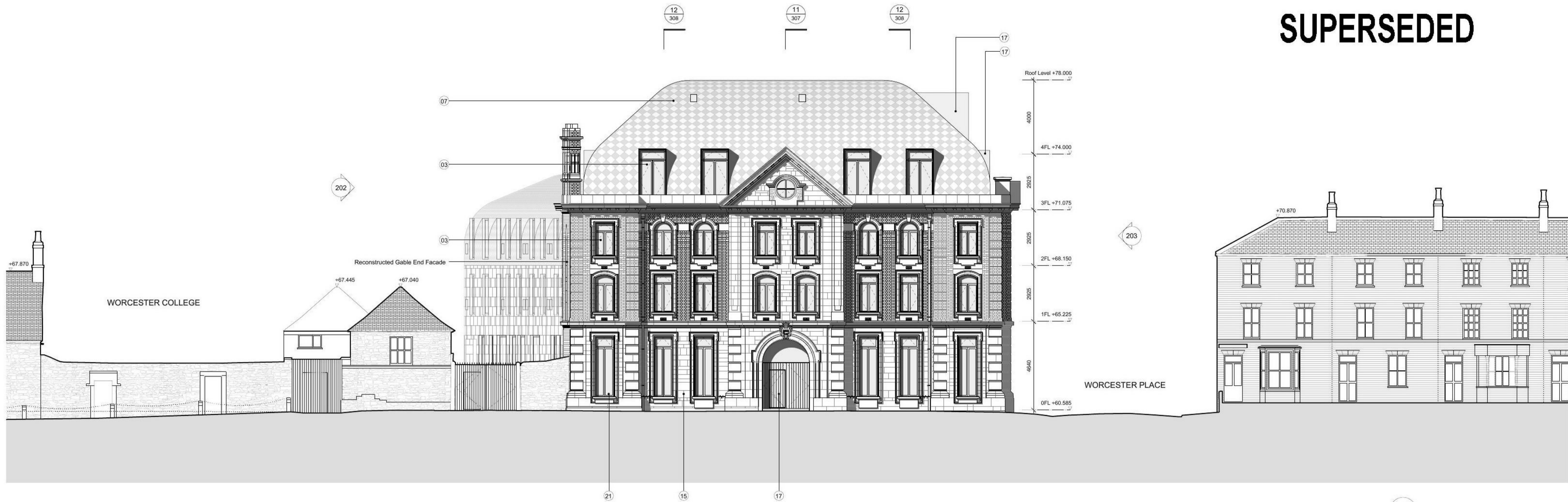
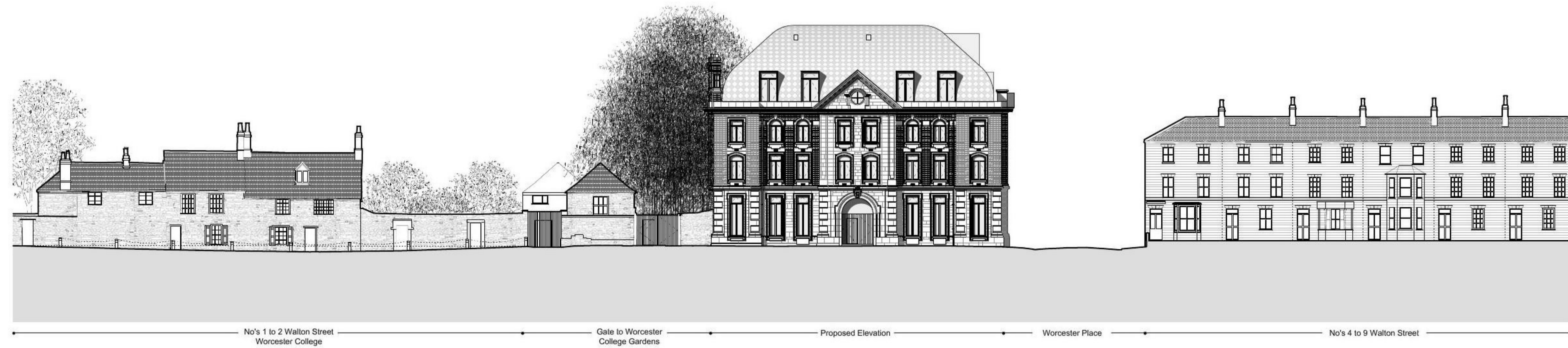


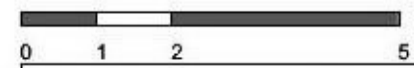
# SUPERSEDED



1 WALTON STREET ELEVATION

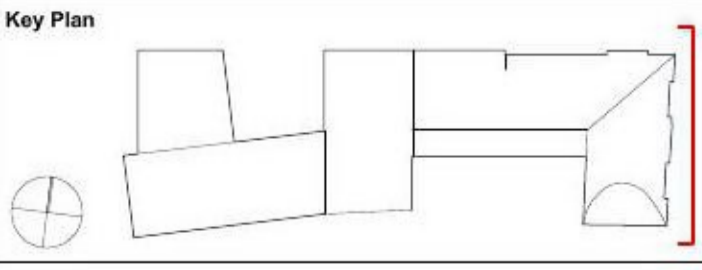


2 WALTON STREET ELEVATION 1:200



Revision	Date	Notes
A	30/11/12	Stage D GA Elevations
B	14/12/12	Two Bottom Windows Added and All Windows Amended to have Panes. Sills lowered on 4 windows on Ruskin Building.
C	15/02/13	Amended to draft planning submission.
D	18/03/13	Detailed Planning Submission.

Notes		
1. Bath Stone	7. Rimex Stainless Steel Roof Tiles	14. Recessed Solar Thermal Array Panels
2. Brick	8. PPC Stainless Steel Ventilation Grill	15. Existing Retained Facade
3. Composite Double Glazed Windows with 200mm Reveals	9. PPC Aluminium Panel	16. Oak Gate with Inset Door
4. Frameless Fixed Glazing	10. Stainless Steel Window System with Door	17. Anodized Aluminium Cladding
5. PPC Aluminium Cappings	11. Aluminium Framed Glazing	18. Double Glazed Dormer
6. PPC Aluminium Gutter Detail	12. Aluminium Framed Glazed Door	19. Glass Balustrade
	13. Metal Gate	20. Frameless Glazing between Timber Fins
		21. Bronze Anodized Casement Windows



1. Do not scale drawings. All dimensions to be checked on site. Errors to be reported to architect. To be read in conjunction with all relevant architects services and engineers drawings.  
 2. Contractors, sub-contractors and suppliers to verify any critical dimensions on site prior to fabrication of any building element. Any discrepancies to be reported to the architect.  
 3. This drawing to be read in conjunction with all relevant specifications, engineers and specialist consultants information and any discrepancies reported prior to installation.



Project	: EXETER COLLEGE WALTON STREET QUAD
Title	: PROPOSED WALTON STREET ELEVATION
Client	: EXETER COLLEGE
Scale	: A3 - 1:200 ; A1 - 1:100
Date	: 18.03.13
Drawing	: 2344_201