



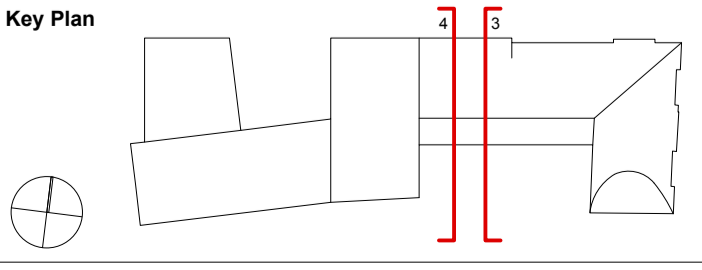
3 CROSS SECTION 3



4 CROSS SECTION 4

Revision	Date	Notes
B	14/12/12	Raised Windows up 450mm
C	15/02/13	Amended to draft planning submission.
D	18/03/13	Detailed Planning Submission
E	25/03/13	Detailed Planning Submission
F	19/07/13	Detailed Planning Submission Admndments

- Notes**
- Bath Stone
 - Brick
 - Composite Double Glazed Windows with 200mm Reveals
 - Inward Opening Casement Window
 - Anodized Aluminium Casings
 - Anodized Aluminium Gutter Detail
 - Remax Stainless Steel Roof Tiles
 - Anodized Aluminium Perforated Panel
 - Anodized Aluminium Panel
 - Steel Window System with Door
 - Anodized Aluminium Framed Glazing
 - Anodized Aluminium Framed Glazed Door
 - Metal Gate
 - Recessed Solar Thermal Array Panels
 - Existing Retained Facade
 - Oak Gate with inset Door
 - Anodized Aluminium Cladding
 - Glazed Dormer
 - Glass Balustrade
 - Frameless Glazing
 - Cycle Storage
 - Bronze Anodized Composite Casement Windows
 - Replacement Crittall Window
 - Replacement Timber Sash



1. Do not scale drawings. All dimensions to be checked on site. Errors to be reported to architect. To be read in conjunction with all relevant architects services and engineers drawings.
 2. Contractors, sub-contractors and suppliers to verify any critical dimensions on site prior to fabrication of any building element. Any discrepancies to be reported to the architect.
 3. This drawing to be read in conjunction with all relevant specifications, engineers and specialists consultants information and any discrepancies reported prior to installation.



Project	: EXETER COLLEGE WALTON STREET QUAD
Title	: PROPOSED SECTION 03 & 04
Client	: EXETER COLLEGE
Scale	: A3 - 1:200 : A1 - 1:100
Date	: 19.07.13
Drawing	: 2344_A302