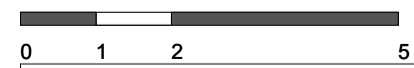
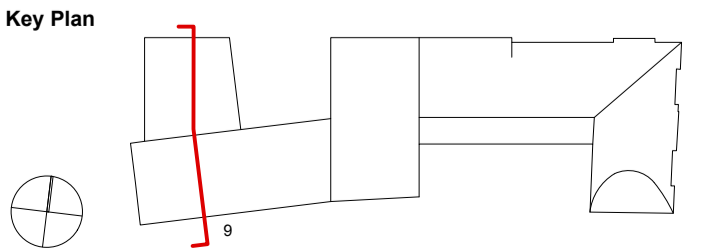


9 CROSS SECTION 9



| Revision | Date | Notes |
|----------|----------|---|
| A | 30/11/12 | Stage D GA Sections |
| B | 08/01/13 | Ground Level Raised and Amended to match all Stage D information. |
| C | 15/02/13 | Amended to draft planning submission. |
| D | 18/03/13 | Detailed Planning Submission |
| E | 19/07/13 | Detailed Planning Submission Admndments |

- Notes**
1. Bath Stone
 2. Brick
 3. Composite Double Glazed Windows with 200mm Reveals
 4. Inward Opening Casement Window
 5. Anodized Aluminium Casings
 6. Anodized Aluminium Gutter Detail
 7. Remex Stainless Steel Roof Tiles
 8. Anodized Aluminium Perforated Panel
 9. Anodized Aluminium Panel
 10. Steel Window System with Door
 11. Anodized Aluminium Framed Glazing
 12. Anodized Aluminium Framed Glazed Door
 13. Metal Gate
 14. Recessed Solar Thermal Array Panels
 15. Existing Retained Facade
 16. Oak Gate with inset Door
 17. Anodized Aluminium Cladding
 18. Glazed Dormer
 19. Glass Balustrade
 20. Frameless Glazing
 21. Cycle Storage
 22. Bronze Anodized Composite Casement Windows
 23. Replacement Crittall Window
 24. Replacement Timber Sash



1. Do not scale drawings. All dimensions to be checked on site. Errors to be reported to architect. To be read in conjunction with all relevant architects services and engineers drawings.
 2. Contractors, sub-contractors and suppliers to verify any critical dimensions on site prior to fabrication of any building element. Any discrepancies to be reported to the architect.
 3. This drawing to be read in conjunction with all relevant specifications, engineers and specialist consultants information and any discrepancies reported prior to installation.



| | |
|----------------|-------------------------------------|
| Project | : EXETER COLLEGE WALTON STREET QUAD |
| Title | : PROPOSED SECTION 09 |
| Client | : EXETER COLLEGE |
| Scale | : A3 - 1:200 : A1 - 1:100 |
| Date | : 19.07.13 |
| Drawing | : 2344_A305 |