



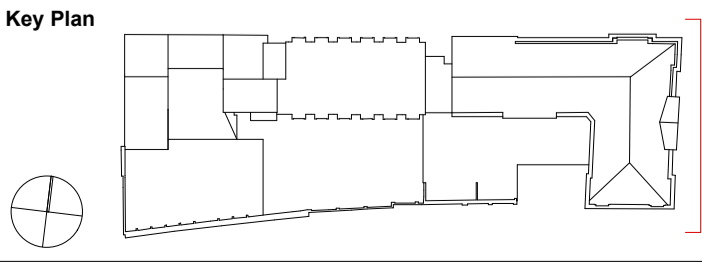
1  
1:100  
WALTON STREET ELEVATION



2  
1:200  
WALTON STREET ELEVATION

Revision	Date	Notes
A	15/02/13	Amended to draft planning submission.
B	18/03/13	Detailed Planning Submission

Notes



1. Do not scale drawings. All dimensions to be checked on site. Errors to be reported to architect. To be read in conjunction with all relevant architects services and engineers drawings.
2. Contractors, sub-contractors and suppliers to verify any critical dimensions on site prior to fabrication of any building element. Any discrepancies to be reported to the architect.
3. This drawing to be read in conjunction with all relevant specifications, engineers and specialist consultants information and any discrepancies reported prior to installation.



Project	: EXETER COLLEGE WALTON STREET QUAD
Title	: EXISTING WALTON STREET ELEVATIONS
Client	: EXETER COLLEGE
Scale	: A3 - 1:200 : A1 - 1:100
Date	: 18.03.13
Drawing	: 2344_A010