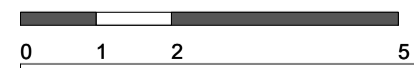


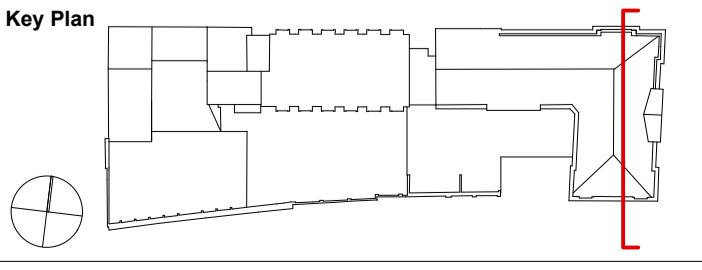
1
1:100

SECTION.EE



Revision	Date	Notes
A	15/02/13	Amended Site Plan to accurately reflect the existing context.
B	18/03/13	Detailed Planning Submission

Notes



1. Do not scale drawings. All dimensions to be checked on site. Errors to be reported to architect. To be read in conjunction with all relevant architects services and engineers drawings.
2. Contractors, sub-contractors and suppliers to verify any critical dimensions on site prior to fabrication of any building element. Any discrepancies to be reported to the architect.
3. This drawing to be read in conjunction with all relevant specifications, engineers and specialists consultants information and any discrepancies reported prior to installation.

ABA

Alison Brooke Architects Ltd
 Studio 610, Highgate Studios, 53/79 Highgate Road, London NWS 1TL
 T 0207 267 9777 F 0207 267 9772 E info@alisonbrookearchitects.com

Project	: EXETER COLLEGE WALTON STREET QUAD
Title	: SECTION EE
Client	: EXETER COLLEGE
Scale	: A3 - 1:200 ; A1 - 1:100
Date	: 18.03.13
Drawing	: 2344_A015