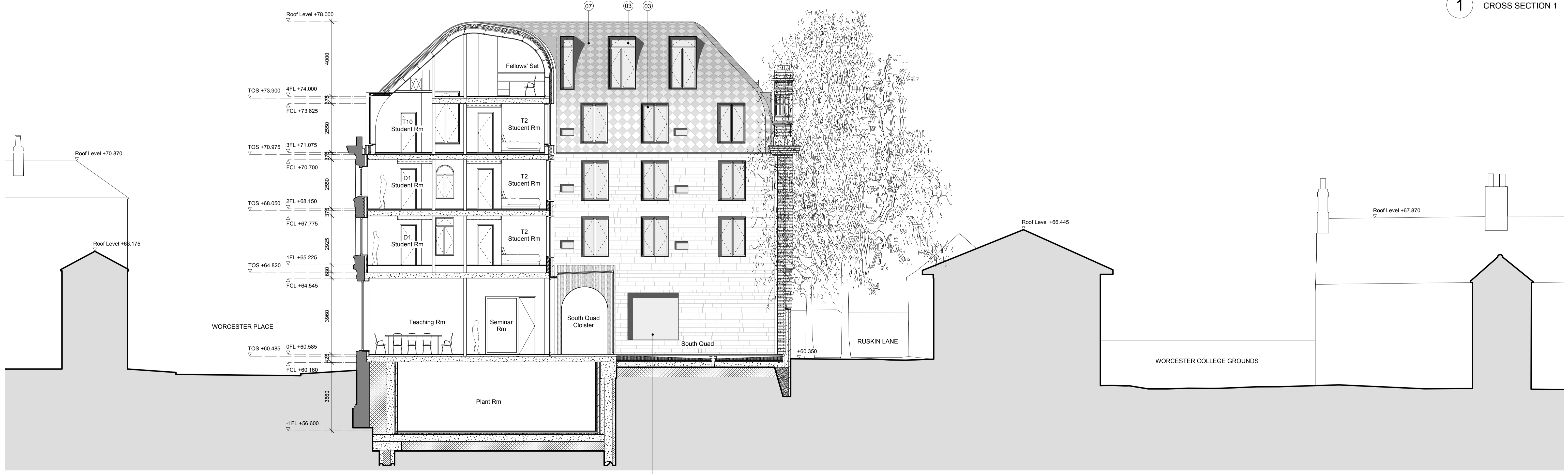


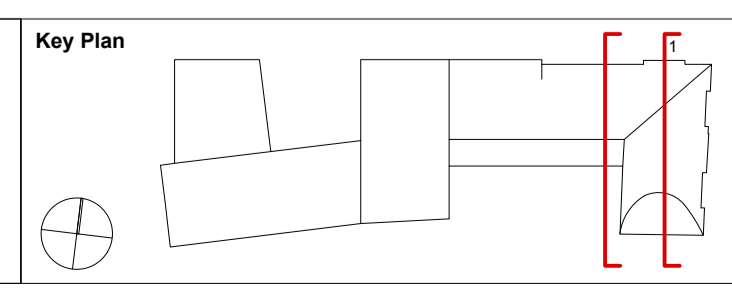
1 CROSS SECTION 1



2 CROSS SECTION 2

Revision	Date	Notes
A	30/11/12	Stage D GA Sections
B	14/12/12	Raised Windows up 450mm
C	15/02/13	Amended to draft planning submission.
D	18/03/13	Detailed Planning Submission

- Notes**
- Bath Stone
 - Brick
 - Composite Double Glazed Windows with 200mm Reveals
 - Frameless Fixed Glazing
 - PPC Aluminium Cappings
 - PPC Aluminium Gutter Detail
 - Rimex Stainless Steel Roof Tiles
 - PPC Stainless Steel Ventilation Grill
 - PPC Aluminium Panel
 - Stainless Steel Window System with Door
 - Aluminium Framed Glazing
 - Aluminium Framed Glazed Door
 - Metal Gate
 - Recessed Solar Thermal Array Panels
 - Existing Retained Facade
 - Oak Gate with inset Door
 - Anodized Aluminium Cladding Reveal
 - Double Glazed Dormer
 - Glass Balustrade
 - Frameless Glazing between Timber Fins



- Do not scale drawings. All dimensions to be checked on site. Errors to be reported to architect. To be read in conjunction with all relevant architects services and engineers drawings.
- Contractors, sub-contractors and suppliers to verify any critical dimensions on site prior to fabrication of any building element. Any discrepancies to be reported to the architect.
- This drawing to be read in conjunction with all relevant specifications, engineers and specialists consultants information and any discrepancies reported prior to installation.



Project	: EXETER COLLEGE WALTON STREET QUAD
Title	: PROPOSED SECTION 01 & 02
Client	: EXETER COLLEGE
Scale	: A3 - 1:200 ; A1 - 1:100
Date	: 18.03.13
Drawing	: 2344_A301