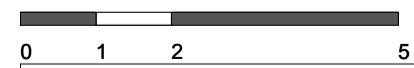
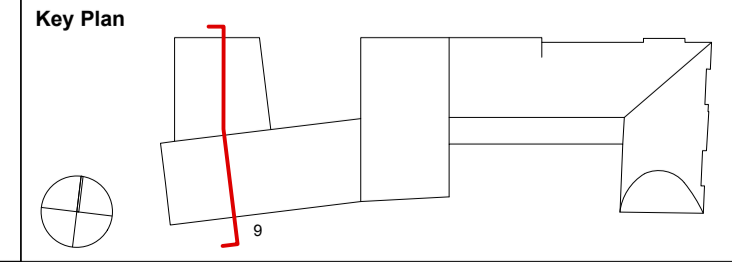


9 CROSS SECTION 9



Revision	Date	Notes
A	30/11/12	Stage D GA Sections
B	08/01/13	Ground Level Raised and Amended to match all Stage D information.
C	15/02/13	Amended to draft planning submission.
D	18/03/13	Detailed Planning Submission

- Notes**
- | | | |
|------------------------------------|---|---|
| 1. Bath Stone | 8. Rimex Stainless Steel Roof Tiles | 15. Recessed Solar Panels |
| 2. Brick | 9. PPC Aluminium Ventilation Grill | 16. Existing Retained Facade |
| 3. Composite Double Glazed Windows | 10. PPC Aluminium Panel | 17. Oak Gate with inset Door |
| 4. Champagne 200mm Reveals | 11. Stainless Steel Window System with Door | 18. Anodized Aluminium Cladding |
| 5. Frameless Fixed Glazing | 12. Aluminium Framed Glazing | 19. Double Glazed Dormer |
| 6. PPC Aluminium Cappings | 13. Aluminium Framed Glazed Door | 20. Glass Balustrade |
| 7. PPC Aluminium Gutter Detail | 14. Metal Gate | 21. Frameless Glass between Timber Fins |



- Do not scale drawings. All dimensions to be checked on site. Errors to be reported to architect. To be read in conjunction with all relevant architects services and engineers drawings.
- Contractors, sub-contractors and suppliers to verify any critical dimensions on site prior to fabrication of any building element. Any discrepancies to be reported to the architect.
- This drawing to be read in conjunction with all relevant specifications, engineers and specialist consultants information and any discrepancies reported prior to installation.



Project	: EXETER COLLEGE WALTON STREET QUAD
Title	: PROPOSED SECTION 09
Client	: EXETER COLLEGE
Scale	: A3 - 1:200 : A1 - 1:100
Date	: 18.03.13
Drawing	: 2344_A305