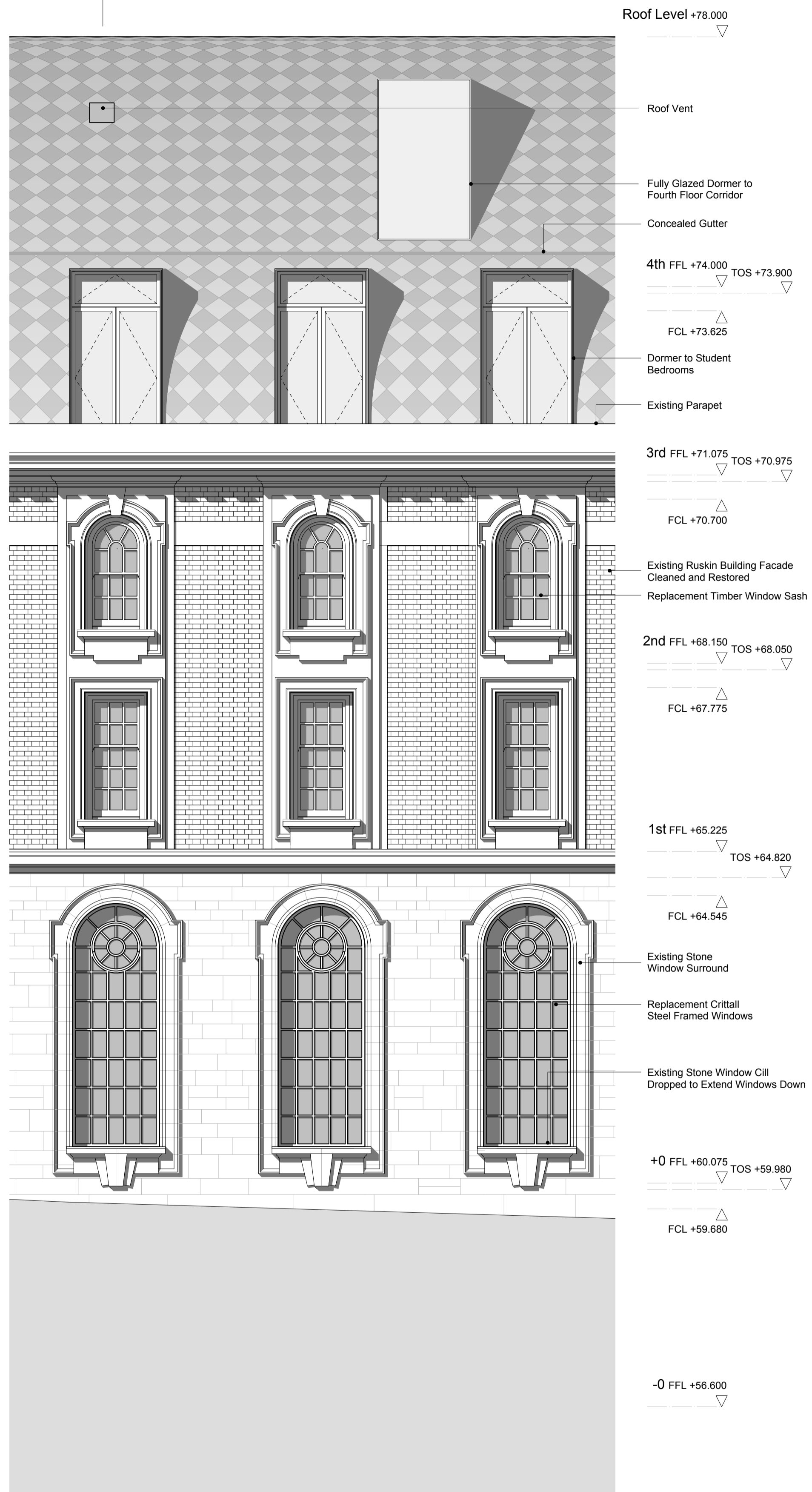
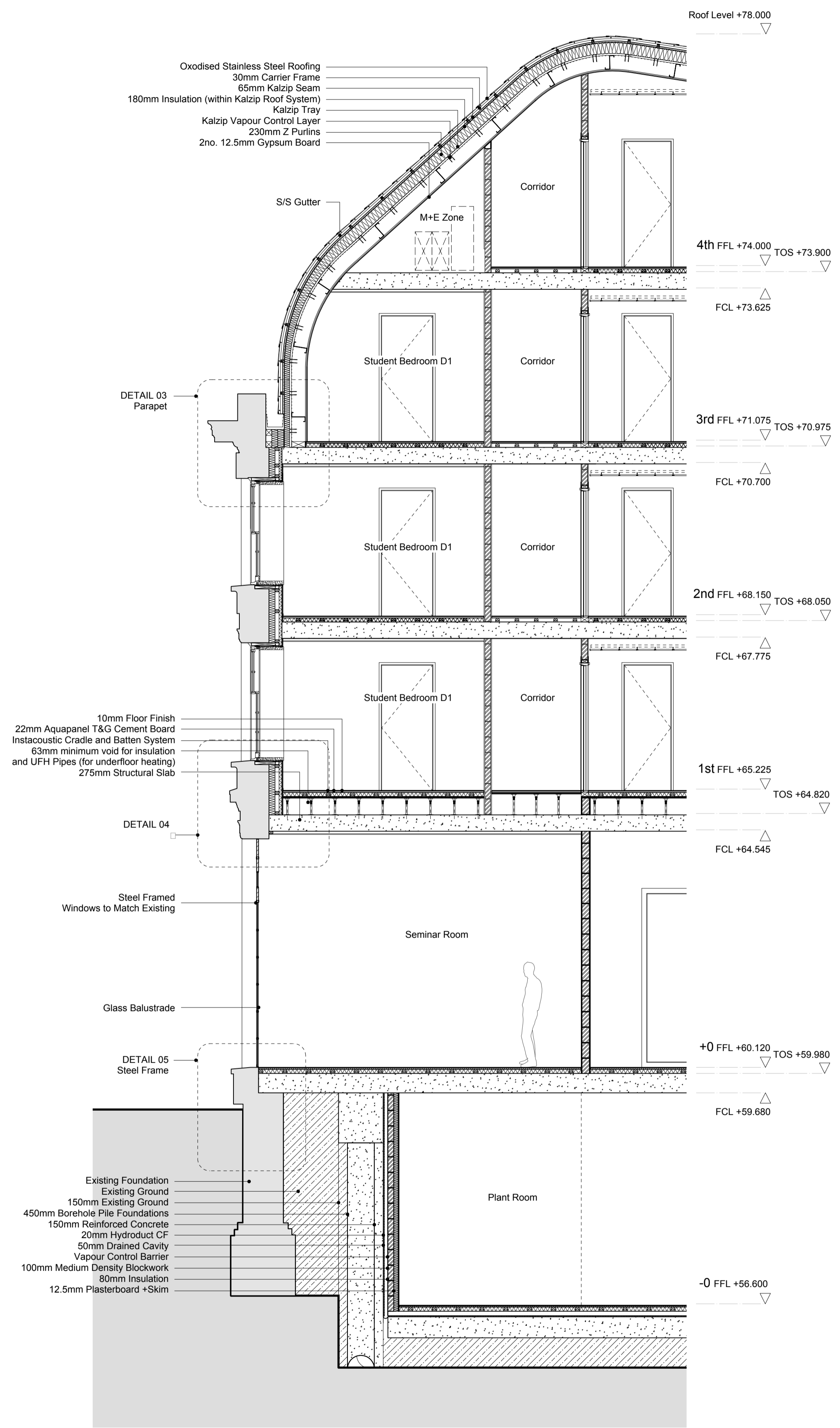


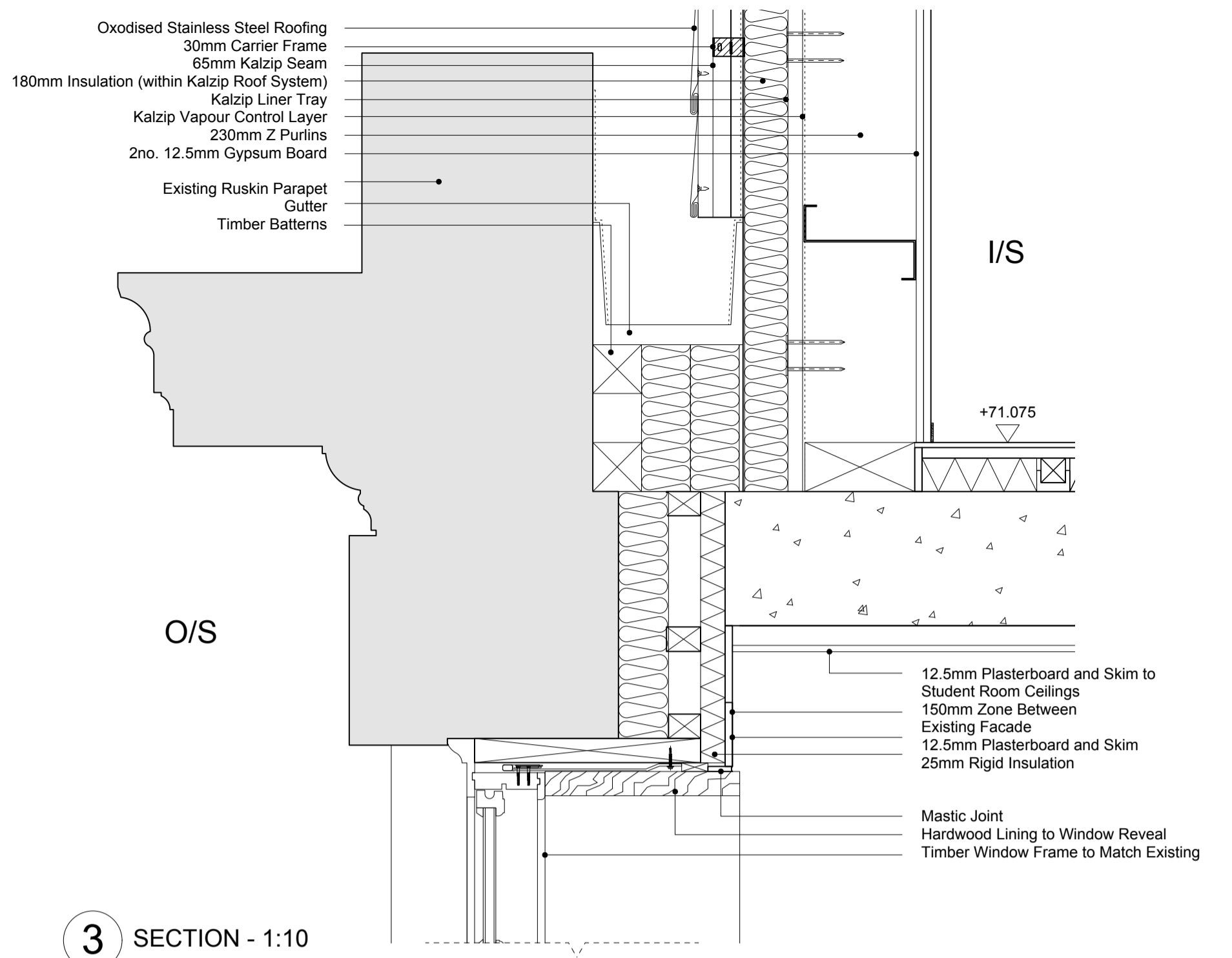
2



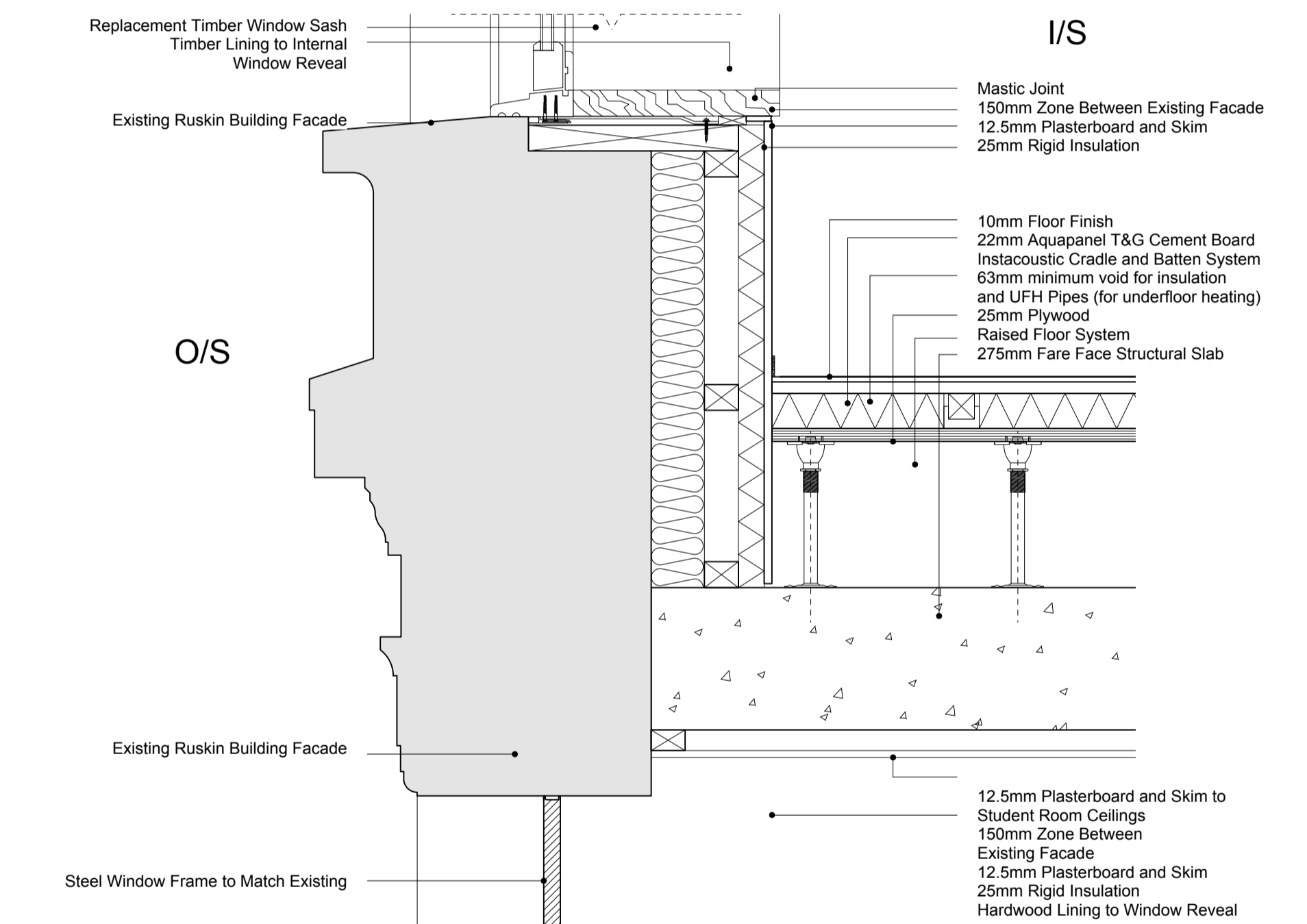
1 DETAILED ELEVATION 02
1:50



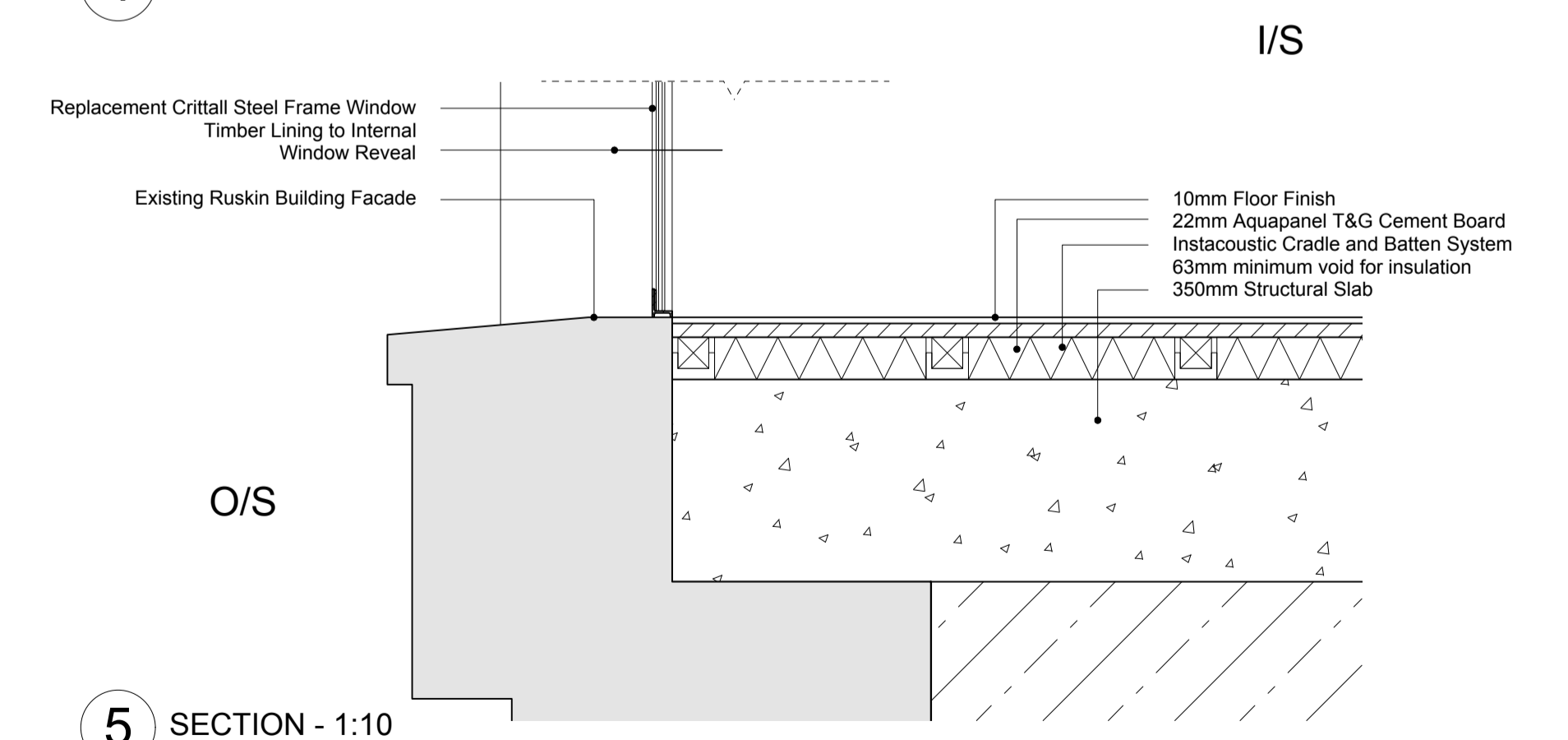
2 DETAILED SECTION 02
1:50



3 SECTION - 1:10



4 SECTION - 1:10



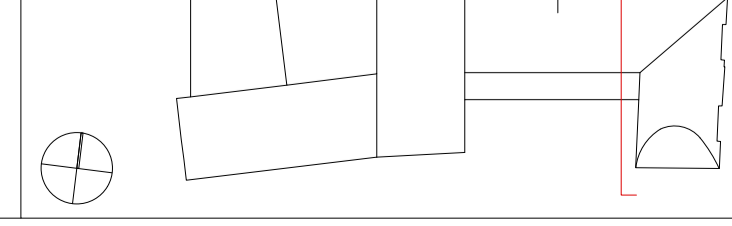
5 SECTION - 1:10

Revision	Date	Notes
A	08/01/13	Ground Floor Level Amended
B	15/02/13	Amended to draft planning submission.
C	18/03/13	Detailed Planning Submission
D	25/03/13	Detailed Planning Submission
E	19/07/13	Detailed Planning Submission Admndments

AMENDED PLAN

Notes

Key Plan



1. Do not scale drawings. All dimensions to be checked on site. Errors to be reported to architect. To be read in conjunction with all relevant architects services and engineers drawings.
2. Contractors, sub-contractors and suppliers to verify any critical dimensions on site prior to fabrication of any building element. Any discrepancies to be reported to the architect.
3. This drawing to be read in conjunction with all relevant specifications, engineers and specialists consultants information and any discrepancies reported prior to installation.



Project	: EXETER COLLEGE WALTON STREET QUAD
Title	: PROPOSED DETAILED SECTION 02
Client	: EXETER COLLEGE
Scale	: A3 - 1:100 : A1 - 1:50
Date	: 19.07.13
Drawing	: 2344_A401