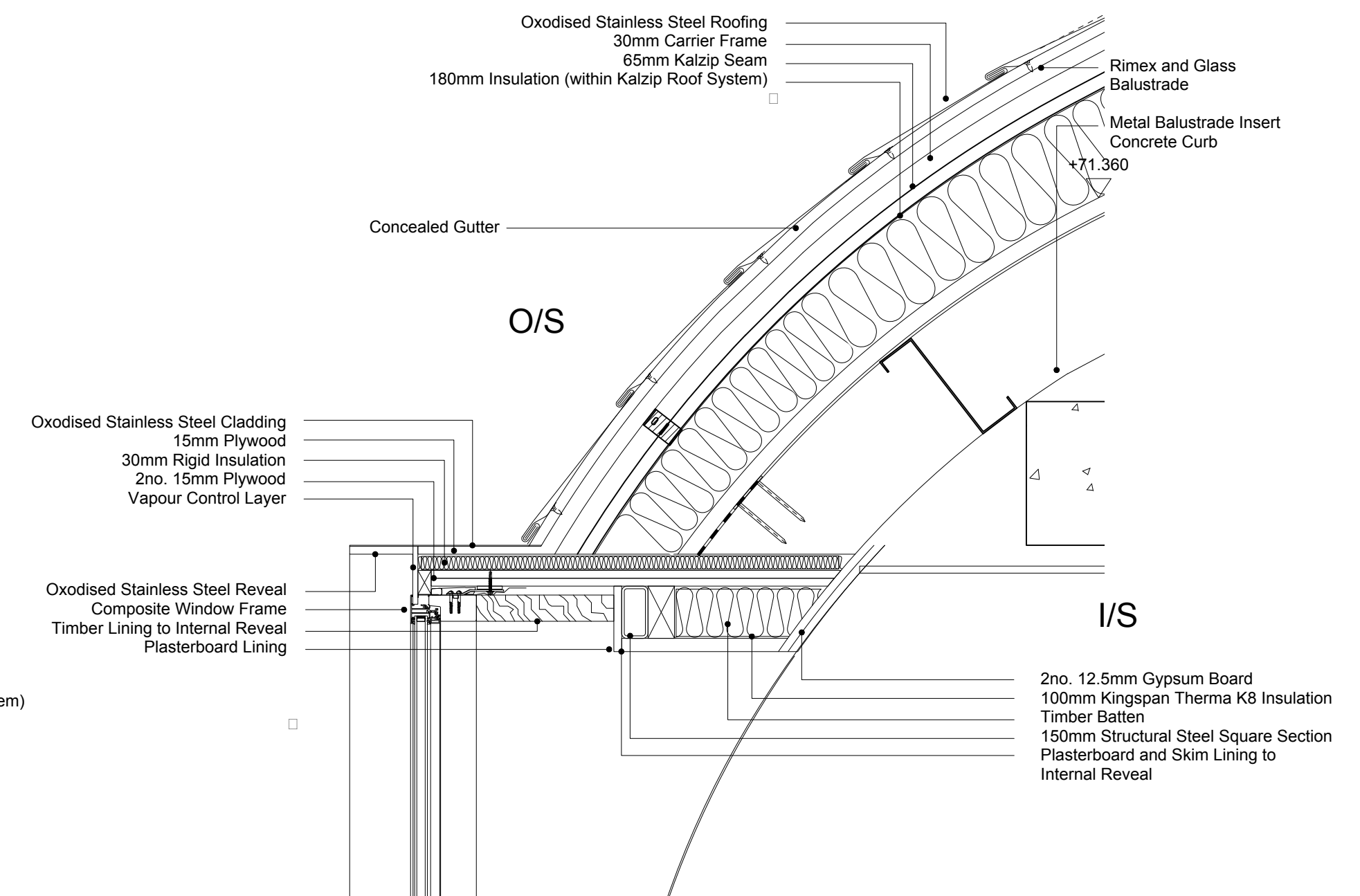
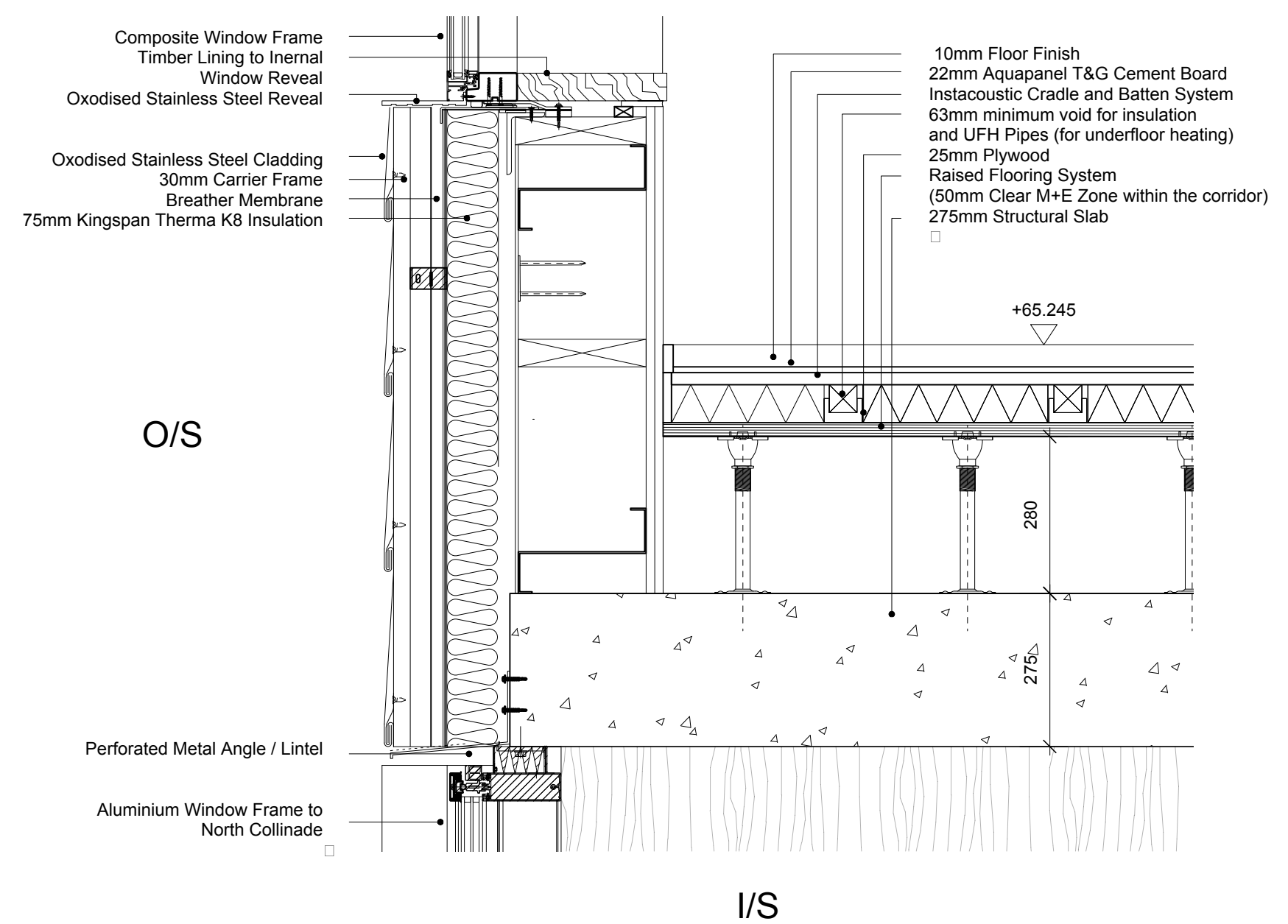




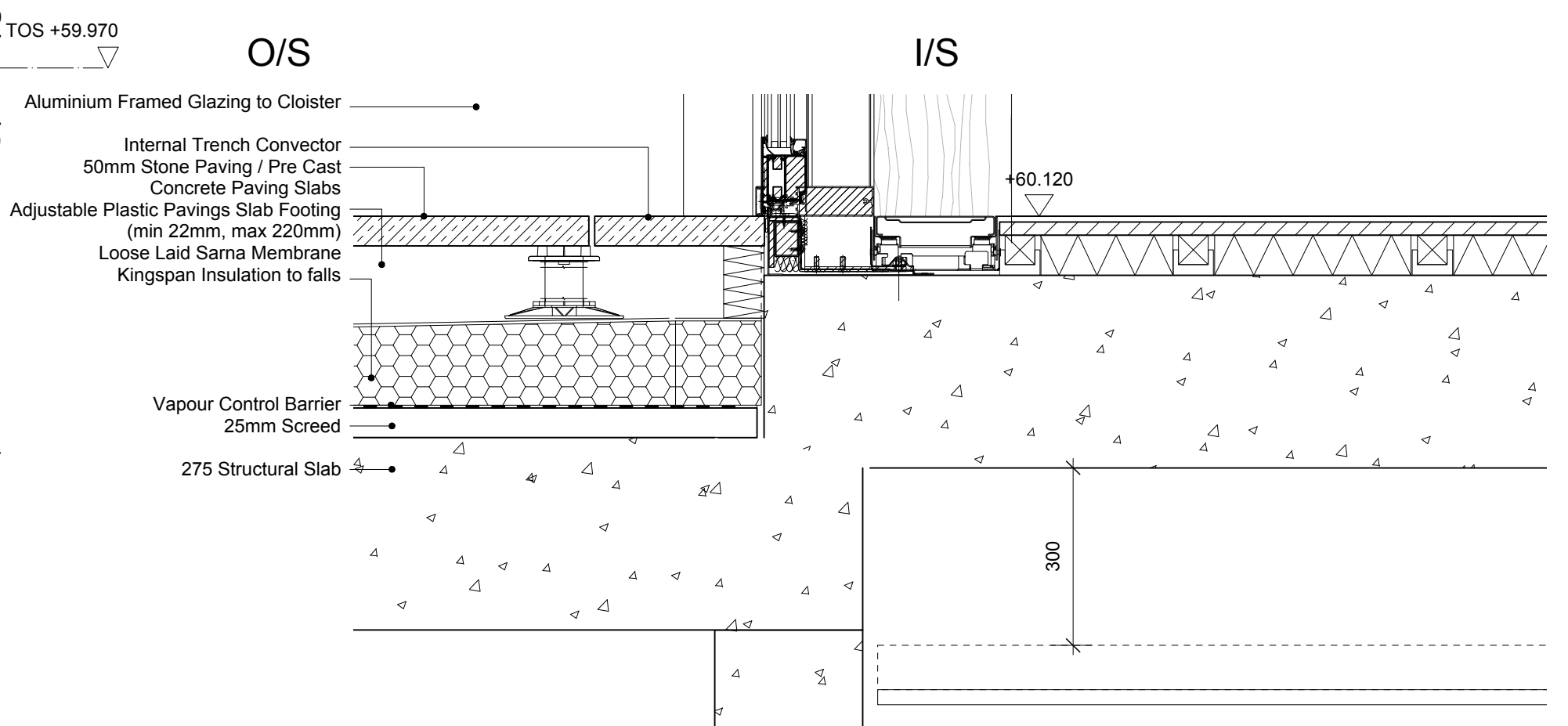
1 SECTION THROUGH WEST WING / NORTH QUAD



2 SECTION - 1:10



3 SECTION - 1:10



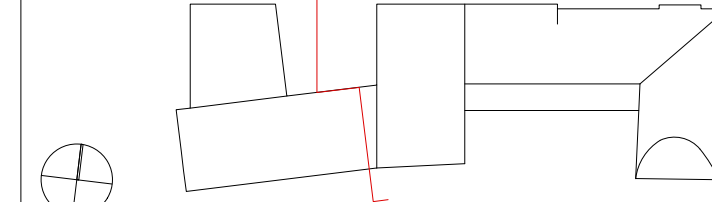
4 SECTION - 1:10

Revision	Date	Notes
A	08/01/13	Levels Amended, Bay window in elevation amended
B	15/02/13	Amended to draft planning submission.
C	18/03/13	Detailed Planning Submission
D	25/03/13	Detailed Planning Submission
E	19/07/13	Detailed Planning Submission Admndments

Notes

AMENDED
PLAN

Key Plan



1. Do not scale drawings. All dimensions to be checked on site. Errors to be reported to architect. To be read in conjunction with all relevant architects services and engineers drawings.
2. Contractors, sub-contractors and suppliers to verify any critical dimensions on site prior to fabrication of any building element. Any discrepancies to be reported to the architect.
3. This drawing to be read in conjunction with all relevant specifications, engineers and specialists consultants information and any discrepancies reported prior to installation.

ABA

Allison Brooke Architects Ltd
Studio 610, Highgate Studios, 53/79 Highgate Road, London N15 1TL
T 0207 267 9777 F 0207 267 9772 E info@alisonbrookearchitects.com

Project	: EXETER COLLEGE WALTON STREET QUAD
Title	: PROPOSED DETAILED SECTION 06
Client	: EXETER COLLEGE
Scale	: A3 - 1:100 : A1 - 1:50
Date	: 19.07.13
Drawing	: 2344_A403