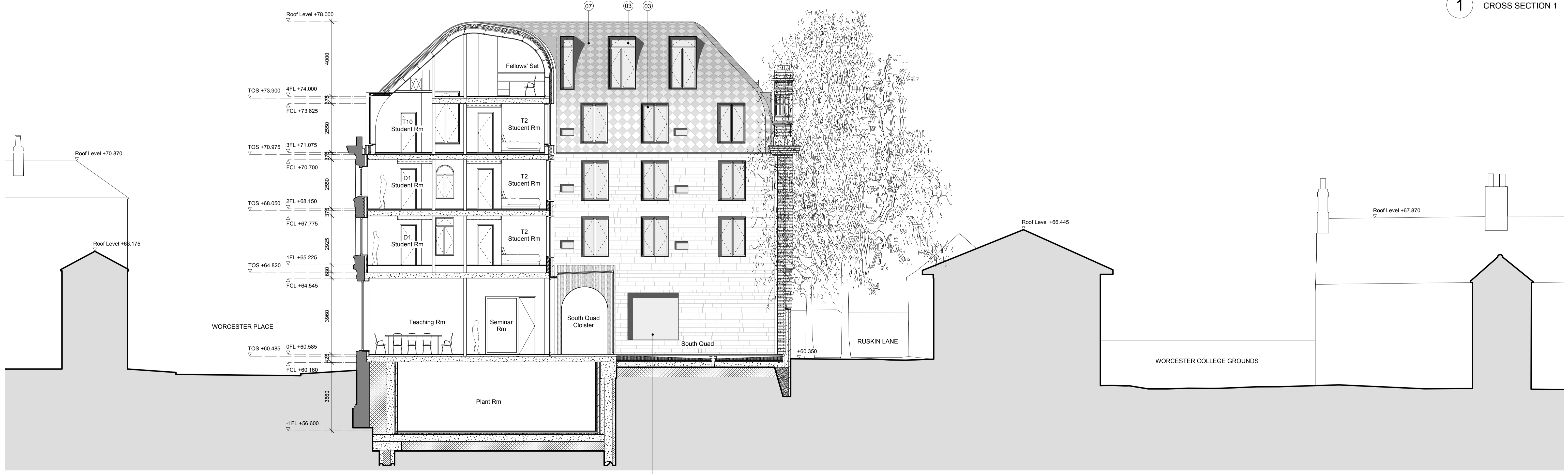


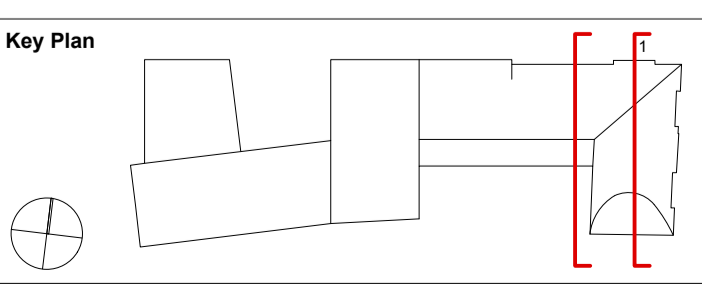
1 CROSS SECTION 1



2 CROSS SECTION 2

| Revision | Date     | Notes                                 |
|----------|----------|---------------------------------------|
| A        | 30/11/12 | Stage D GA Sections                   |
| B        | 14/12/12 | Raised Windows up 450mm               |
| C        | 15/02/13 | Amended to draft planning submission. |
| D        | 18/03/13 | Detailed Planning Submission          |

- Notes**
- Bath Stone
  - Brick
  - Composite Double Glazed Windows with 200mm Reveals
  - Frameless Fixed Glazing
  - PPC Aluminium Cappings
  - PPC Aluminium Gutter Detail
  - Rimex Stainless Steel Roof Tiles
  - PPC Stainless Steel Ventilation Grill
  - PPC Aluminium Panel
  - Stainless Steel Window System with Door
  - Aluminium Framed Glazing
  - Aluminium Framed Glazed Door
  - Metal Gate
  - Recessed Solar Thermal Array Panels
  - Existing Retained Facade
  - Oak Gate with inset Door
  - Anodized Aluminium Cladding Reveal
  - Double Glazed Dormer
  - Glass Balustrade
  - Frameless Glazing between Timber Fins



- Do not scale drawings. All dimensions to be checked on site. Errors to be reported to architect. To be read in conjunction with all relevant architects services and engineers drawings.
- Contractors, sub-contractors and suppliers to verify any critical dimensions on site prior to fabrication of any building element. Any discrepancies to be reported to the architect.
- This drawing to be read in conjunction with all relevant specifications, engineers and specialists consultants information and any discrepancies reported prior to installation.



|                |                                     |
|----------------|-------------------------------------|
| <b>Project</b> | : EXETER COLLEGE WALTON STREET QUAD |
| <b>Title</b>   | : PROPOSED SECTION 01 & 02          |
| <b>Client</b>  | : EXETER COLLEGE                    |
| <b>Scale</b>   | : A3 - 1:200 ; A1 - 1:100           |
| <b>Date</b>    | : 18.03.13                          |
| <b>Drawing</b> | : 2344_A301                         |