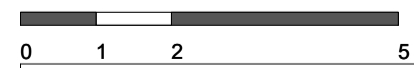
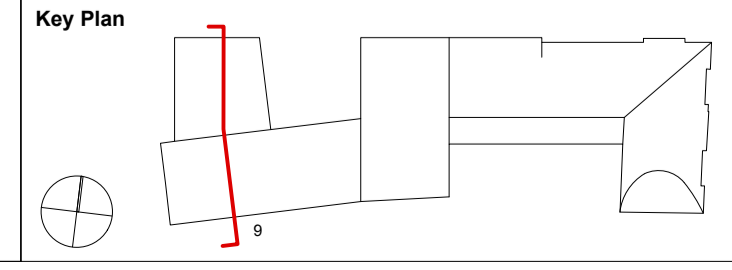


9 CROSS SECTION 9



Revision	Date	Notes
A	30/11/12	Stage D GA Sections
B	08/01/13	Ground Level Raised and Amended to match all Stage D information.
C	15/02/13	Amended to draft planning submission.
D	18/03/13	Detailed Planning Submission

- Notes**
- Bath Stone
  - Brick
  - Composite Double Glazed Windows
  - Champagne 200mm Reveals
  - Frameless Fixed Glazing
  - PPC Aluminium Cappings
  - PPC Aluminium Gutter Detail
  - Rimex Stainless Steel Roof Tiles
  - PPC Aluminium Ventilation Grill
  - PPC Aluminium Panel
  - Stainless Steel Window System with Door
  - Aluminium Framed Glazing
  - Aluminium Framed Glazed Door
  - Metal Gate
  - Recessed Solar Panels
  - Existing Retained Facade
  - Oak Gate with inset Door
  - Anodized Aluminium Cladding
  - Double Glazed Dormer
  - Glass Balustrade
  - Frameless Glass between Timber Fins



- Do not scale drawings. All dimensions to be checked on site. Errors to be reported to architect. To be read in conjunction with all relevant architects services and engineers drawings.
- Contractors, sub-contractors and suppliers to verify any critical dimensions on site prior to fabrication of any building element. Any discrepancies to be reported to the architect.
- This drawing to be read in conjunction with all relevant specifications, engineers and specialist consultants information and any discrepancies reported prior to installation.



<b>Project</b>	: EXETER COLLEGE WALTON STREET QUAD
<b>Title</b>	: PROPOSED SECTION 09
<b>Client</b>	: EXETER COLLEGE
<b>Scale</b>	: A3 - 1:200 : A1 - 1:100
<b>Date</b>	: 18.03.13
<b>Drawing</b>	: 2344_A305