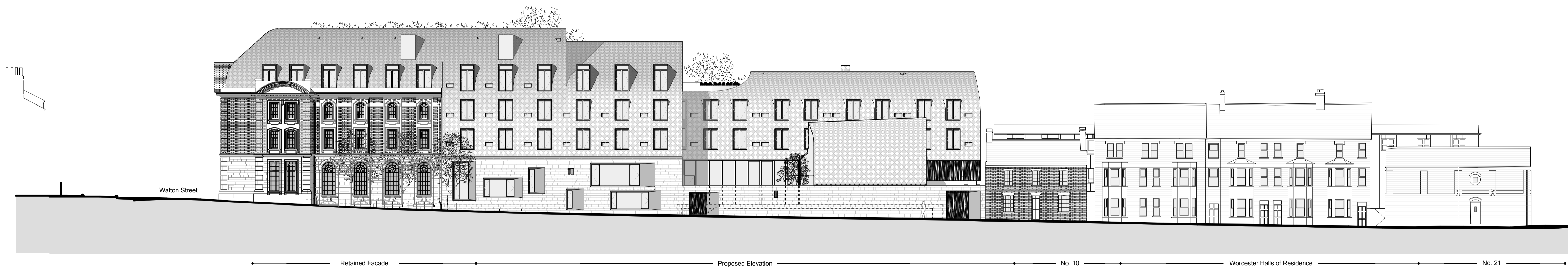
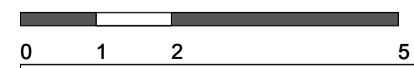




1 WORCESTER PLACE ELEVATION

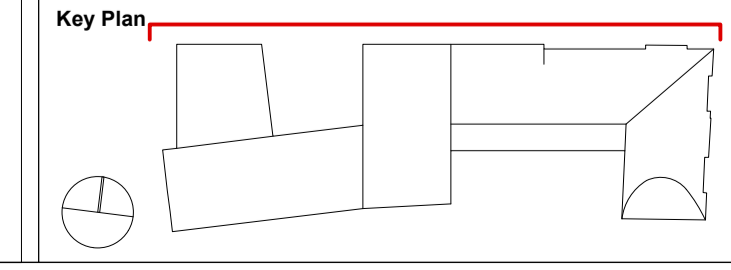


2 WORCESTER PLACE ELEVATION 1:200



Revision	Date	Notes
A	03/10/13	Issue for Information.
B	31/10/13	Updated Elevations.

Notes		
1. Bath Stone	7. Rimex Stainless Steel Roof Tiles	15. Existing Retained Facade
2. Brick	8. PPC Stainless Steel Grill	16. Oak Gate with inset Door
3. Composite Double Glazed Windows with 200mm Reveals	9. PPC Aluminium Panel	17. Anodized Aluminium Cladding, reveal
4. Frameless Fixed Glazing	10. Stainless Steel Window System with Door	18. Double Glazed Dormer
5. PPC Aluminium Cappings	11. Aluminium Framed Glazing	19. Glass Balustrade
6. PPC Aluminium Gutter Detail	12. Aluminium Framed Glazed Door	20. Frameless Glazing between Timber Fins
	13. Metal Gate	21. Cycle Storage
	14. Recessed Solar Thermal Array Panels	22. Bronze Anodized Casement Windows



1. Do not scale drawings. All dimensions to be checked on site. Errors to be reported to architect. To be read in conjunction with all relevant architects services and engineers drawings.  
 2. Contractors, sub-contractors and suppliers to verify any critical dimensions on site prior to fabrication of any building element. Any discrepancies to be reported to the architect.  
 3. This drawing to be read in conjunction with all relevant specifications, engineers and specialists consultants information and any discrepancies reported prior to installation.



Project	: EXETER COLLEGE WALTON STREET QUAD
Title	: PROPOSED WORCESTER PLACE ELEVATION
Client	: EXETER COLLEGE
Scale	: A3 - 1:200 : A1 - 1:100
Date	: 31.10.13
Drawing	: 2344_A0072