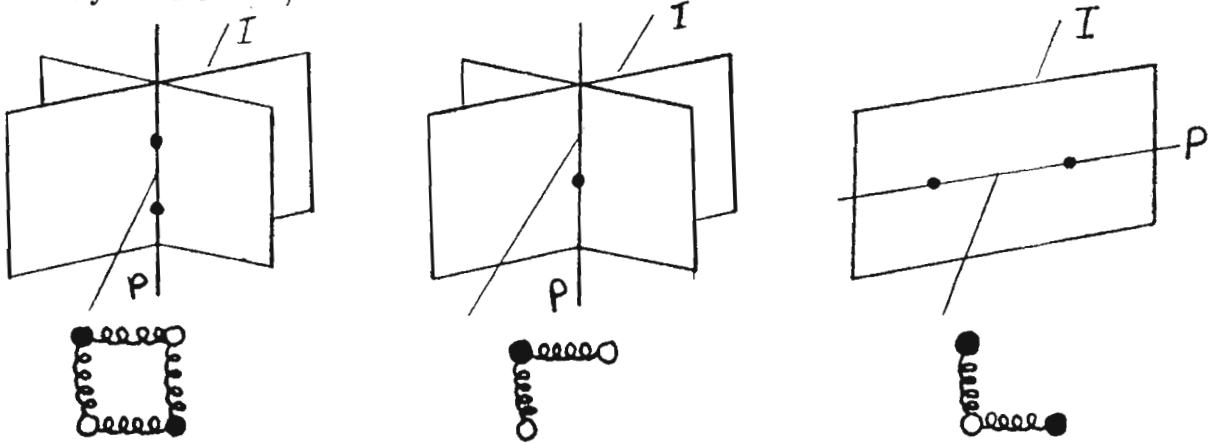


of intersection in *compactified CM*. If two complex null rays intersect at a point P of \mathbf{CM}^4 then this point is unique. In \mathbf{PT} there are three cases, and the situation for parallel rays is shown by the line $I^{\alpha\beta}$,



Thanks especially to Franz Muller for hospitality at I.H.E.S., to S.A. Huggett for suggesting this for TN, and to R.P. for helpful comments.

Tim Field .

Conference Proceedings: Twistor Theory

edited by S.Huggett

The proceedings of the 1993 Twistor Conference, edited by S.Huggett, are being published as Volume 169 of the Marcel Dekker, Inc. Series of Pure and Applied Mathematics books.

The contents are as follows:

1. Thomas's D-Calculus, Parabolic Invariant Theory, and Conformal Invariants.
T.N.Bailey
2. Cohomogeneity-One Kahler Metrics.
A.S.Dancer and I.A.B.Strachan
3. Another Integral Transform in Twistor Theory.
M.Eastwood
4. Twistors and Spin 3/2 Potentials in Quantum Gravity.
G.Esposito and G.Pollifrone
5. Analytic Cohomology of Blown-Up Twistor Spaces.
R.Horan
6. Geometric Aspects of Quantum Mechanics.
L.P.Hughston
7. Anti-Self-Dual Riemannian 4-Manifolds.
C.LeBrun

(continued on page 42)

References

- [Hodges 85] A.P.Hodges 1985 *Mass Eigenstates in Twistor Theory. Proc. Roy. Soc. Lond. A397, 375-396.*
- [Hodges 91] A.P.Hodges 1991 *New contours with boundary ... and massive propagators. Twistor Newsletter 32.* Mathematical Institute, Oxford.
- [Hodges 94a] A.P.Hodges 1994 *Update on the massive propagator in twistor diagrams. Twistor Newsletter 37.* Mathematical Institute, Oxford.
- [Hodges 94b] A.P.Hodges 1994 *Progress with the massive propagator in twistor diagrams. Twistor Newsletter 38.* Mathematical Institute, Oxford.

Stephen Spence.

(Conference proceedings continued from page 34)

8. Generalised Twistor Correspondences, d-Bar Problems and the KP Equations.
L.J.Mason
9. Relative Deformation Theory and Differential Geometry.
S.A.Merkulov
10. Self-Duality and Connected Sums of Complex Projective Planes.
H.Pederson
11. Twistors and the Einstein Equations.
R.Penrose
12. Remarks on the Period Mapping for 4-Dimensional Conformal Structures.
M.Singer
13. Cohomogeneity-One Metrics with Self-Dual Weyl Tensor.
K.P.Tod
14. Twistor Theory and Isomonodromy.
N.M.J.Woodhouse

The volume should appear in November.