



1 CROSS SECTION THROUGH SOUTH QUAD
1:50

Rimex Cladding

Oxidised Stainless Steel Roofing
30mm Carrier Frame
65mm Kalzip Seam
180mm Insulation (within Kalzip Roof System)
Kalzip Tray
Kalzip Vapour Control Layer
230mm Z Purlins
2no. 12.5mm Gypsum Board

4th FFL +74.000 TOS +73.900

FCL +73.625

Aluminium Framed Window

Aluminium Framed Windows to Fellow's Studies

10mm Floor Finish
22mm Aquapanel T&G Cement Board
Instacoustic Cradle and Batten System
63mm minimum void for insulation and UFH Pipes (for underfloor heating)
300mm Structural Slab

3th FFL +71.360 TOS +71.260

FCL +70.700

Composite Framed Windows to Family Kitchens

Bath Stone

2nd FFL +68.150 TOS +68.050

FCL +67.775

Gutter

1st FFL +65.225 TOS +64.820

FCL +64.545

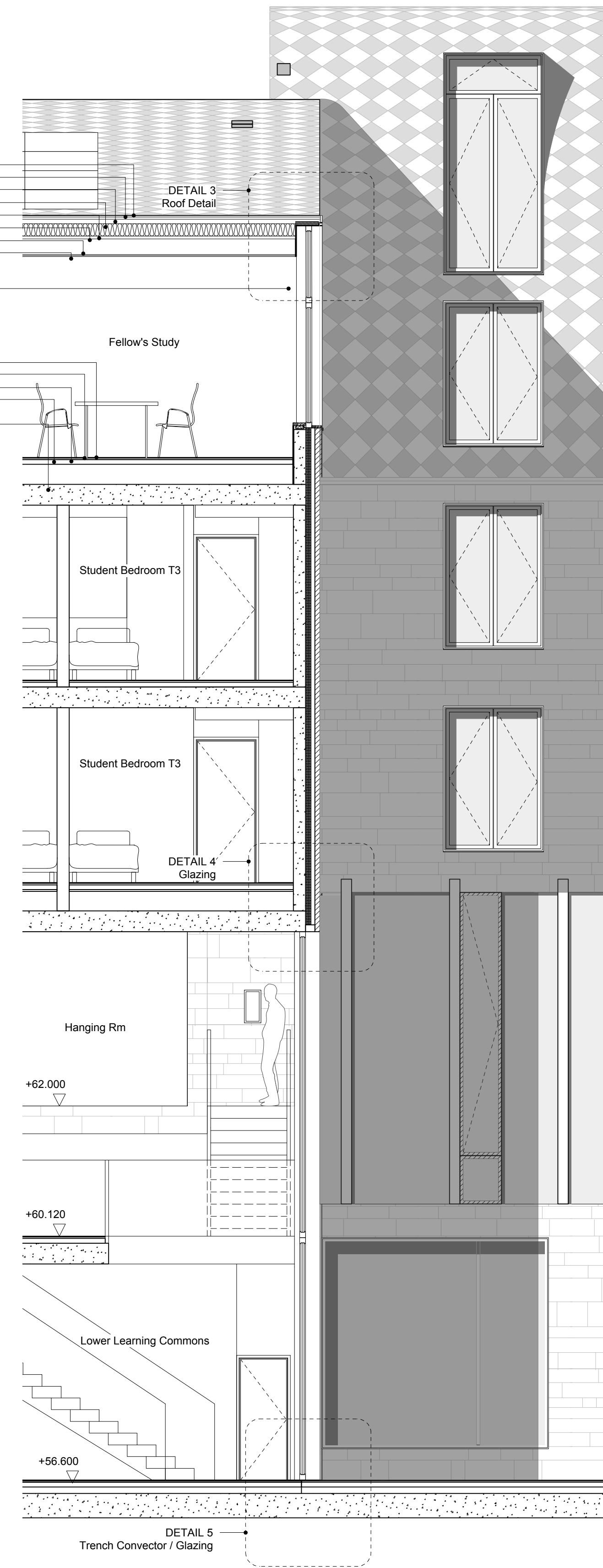
South Quad Cloister

Lower Learning Commons

+0 FFL +60.120 TOS +60.020

FCL +59.720

-0 FFL +56.600



2 SECTION THROUGH LEARNING COMMONS AND SOUTH QUAD
1:50

Roof Level +78.000

4th FFL +74.000 TOS +73.900

FCL +73.625

3rd FFL +71.075 TOS +70.975

FCL +70.700

2nd FFL +68.150 TOS +68.050

FCL +67.775

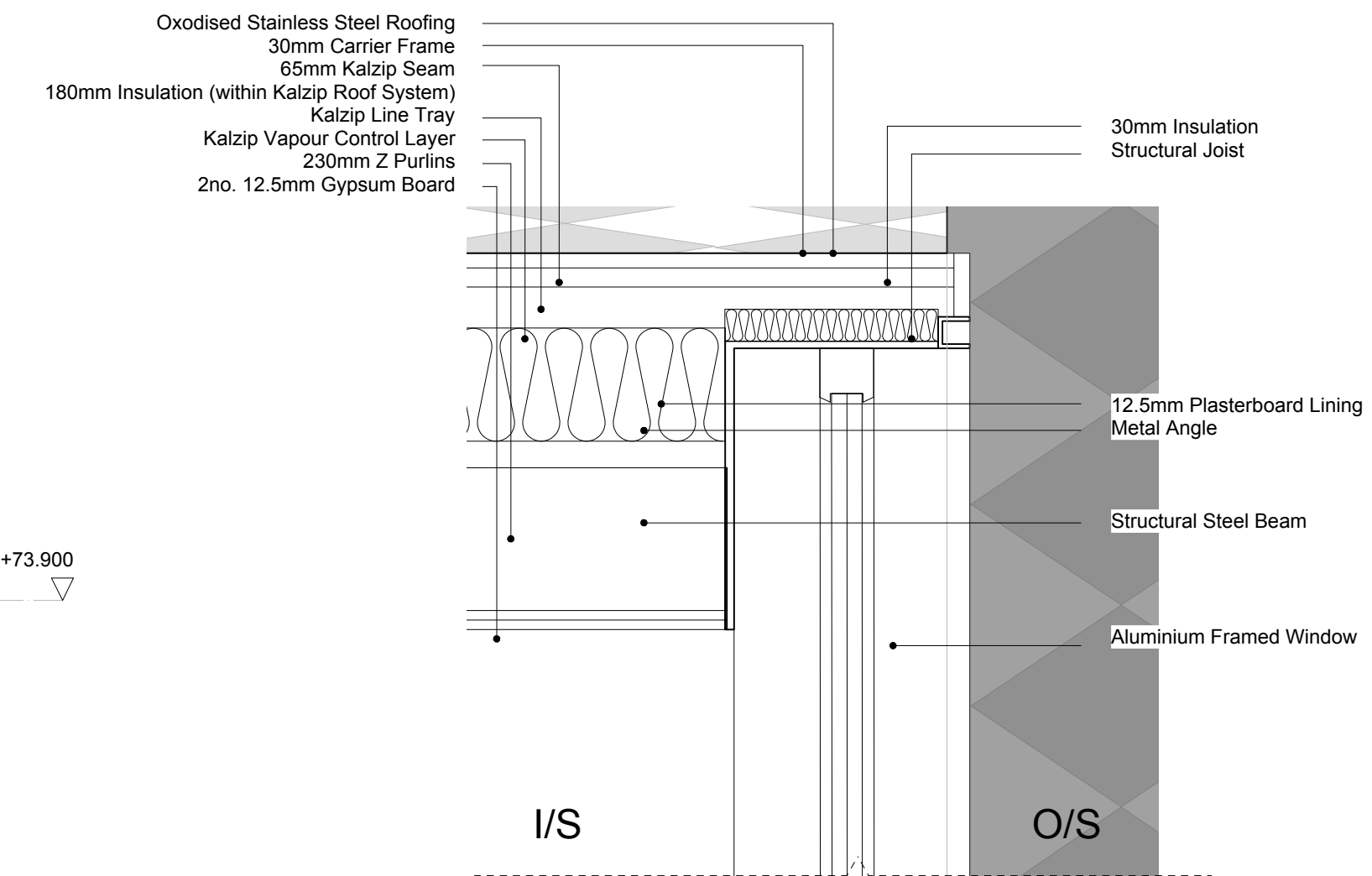
1st FFL +65.225 TOS +64.820

FCL +64.545

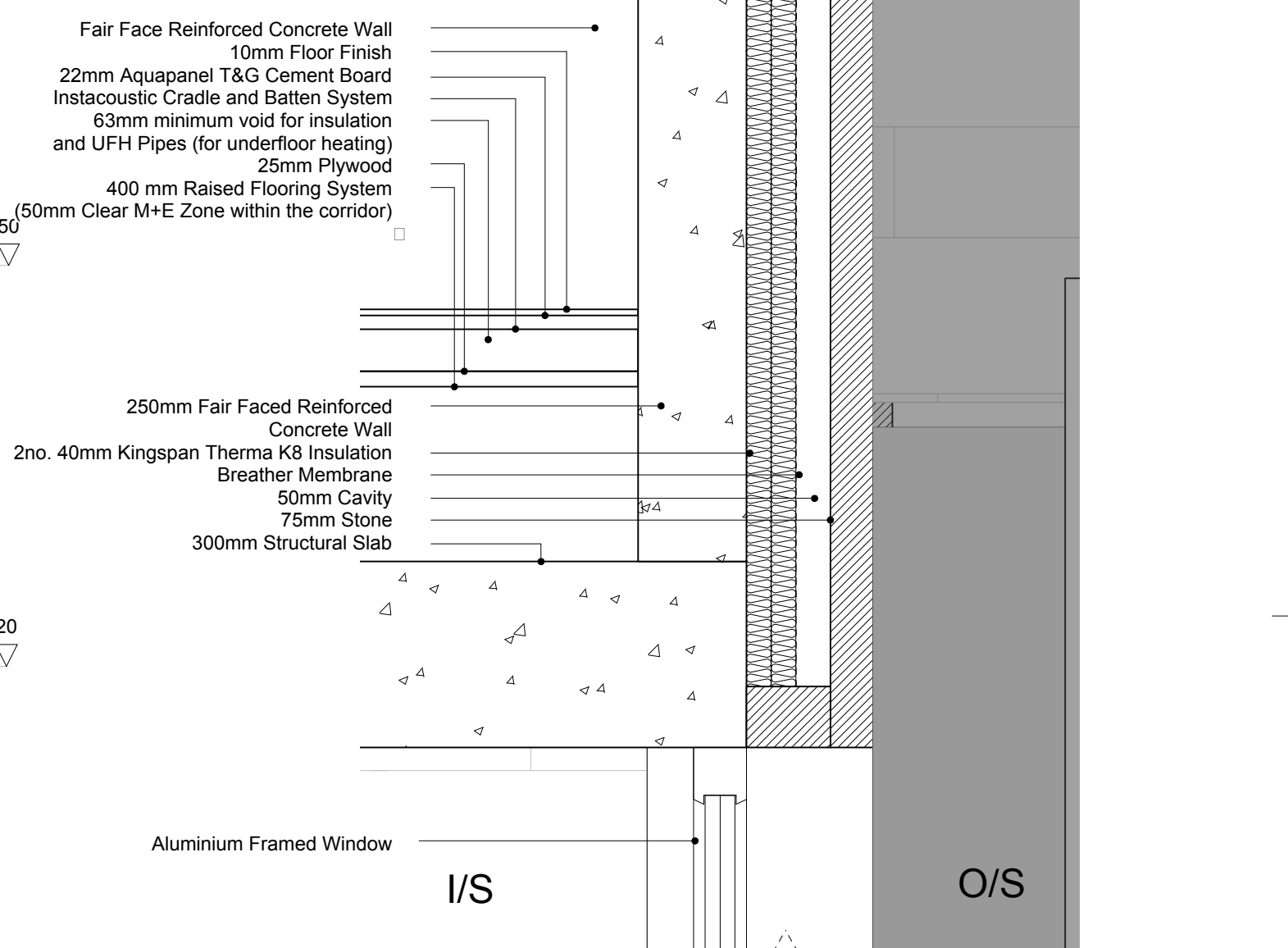
+0 FFL +60.120 TOS +60.020

FCL +59.720

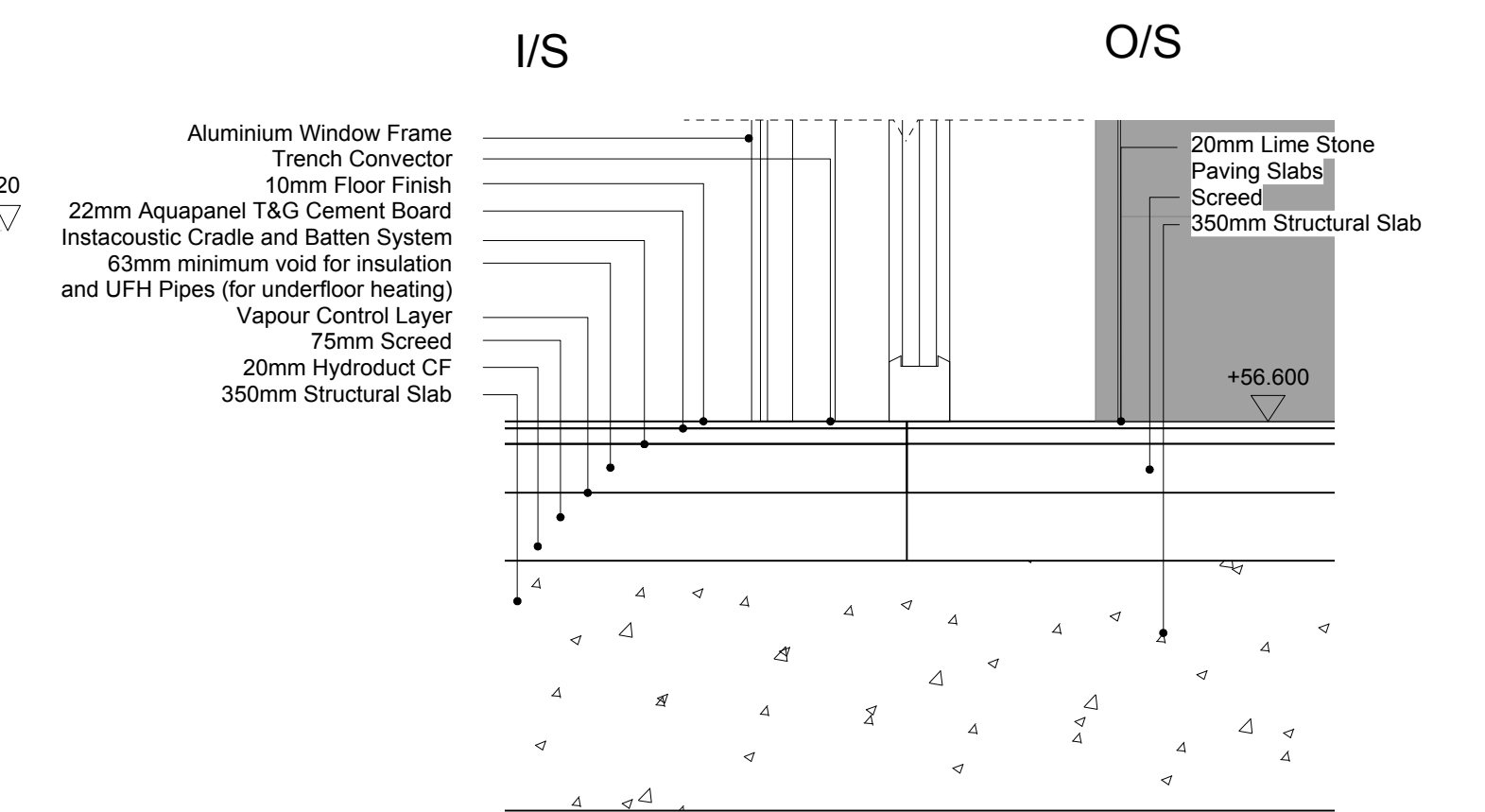
-0 FFL +56.600



3 SECTION - 1:10



4 SECTION - 1:10



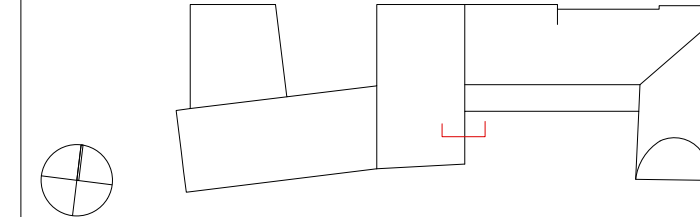
5 SECTION - 1:10

Revision	Date	Notes
A	08/01/13	Ground Floor level amended
B	15/02/13	Amended to draft planning submission.
C	18/03/13	Detailed Planning Submission
D	25/03/13	Detailed Planning Submission
E	19/07/13	Detailed Planning Submission Admndments

AMENDED PLAN

Notes

Key Plan



1. Do not scale drawings. All dimensions to be checked on site. Errors to be reported to architect. To be read in conjunction with all relevant architects services and engineers drawings.

2. Contractors, sub-contractors and suppliers to verify any critical dimensions on site prior to fabrication of any building element. Any discrepancies to be reported to the architect.

3. This drawing to be read in conjunction with all relevant specifications, engineers and specialists consultants information and any discrepancies reported prior to installation.

ABA

Allison Brooks Architects Ltd
Studio 610, Highgate Studios, 53/79 Highgate Road, London NWS 1TL
T 0207 287 9777 F 0207 287 9772 E info@allisonbrooksarchitects.com

Project : EXETER COLLEGE WALTON STREET QUAD
Title : PROPOSED DETAILED SECTION 12
Client : EXETER COLLEGE
Scale : A3 - 1:100 : A1 - 1:50
Date : 19.07.13
Drawing : 2344_A404