



1 CROSS SECTION THROUGH SOUTH QUAD
1:50

Rimex Cladding

Oxidised Stainless Steel Roofing
30mm Carrier Frame
65mm Kalzip Seam
180mm Insulation (within Kalzip Roof System)
Kalzip Vapour Control Layer
230mm Z Purlins
2no. 12.5mm Gypsum Board

Aluminium Framed Window

Aluminium Framed Windows
to Fellow's Studies

10mm Floor Finish
22mm Aquapanel T&G Cement Board
Instacoustic Cradle and Batten System
63mm minimum void for insulation
and UFH Pipes (for underfloor heating)
300mm Structural Slab

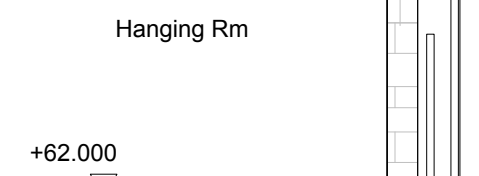
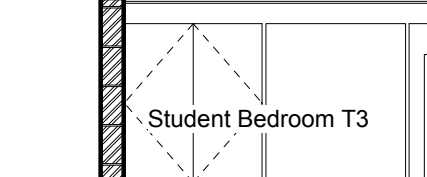
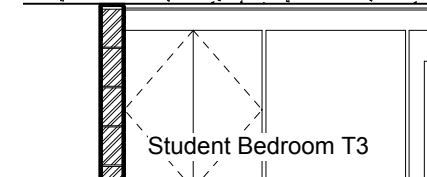
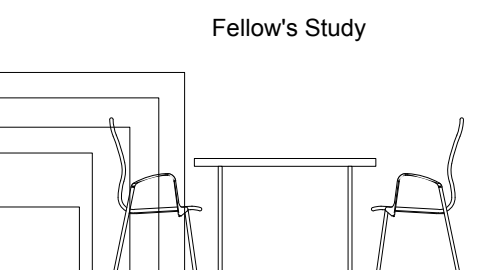
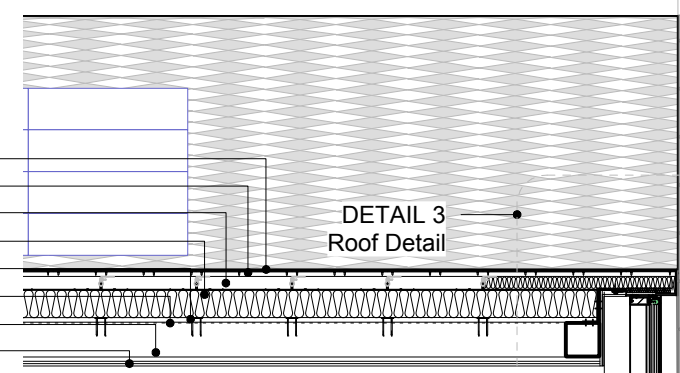
Composite Framed Windows
to Family Kitchens

Bath Stone

Gutter

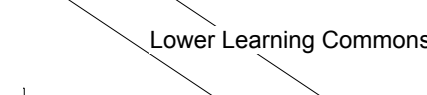
South Quad
Cloister

Lower Learning Commons



+62.000

+60.120



+56.600

DETAIL 5
Trench Convector / Glazing

2 SECTION THROUGH LEARNING COMMONS AND SOUTH QUAD
1:50

Roof Level +77.875

4th FFL +74.000 TOS +73.900

FCL +73.625

3rd FFL +71.075 TOS +70.975

FCL +70.700

2nd FFL +68.150 TOS +68.050

FCL +67.775

1st FFL +65.225 TOS +64.820

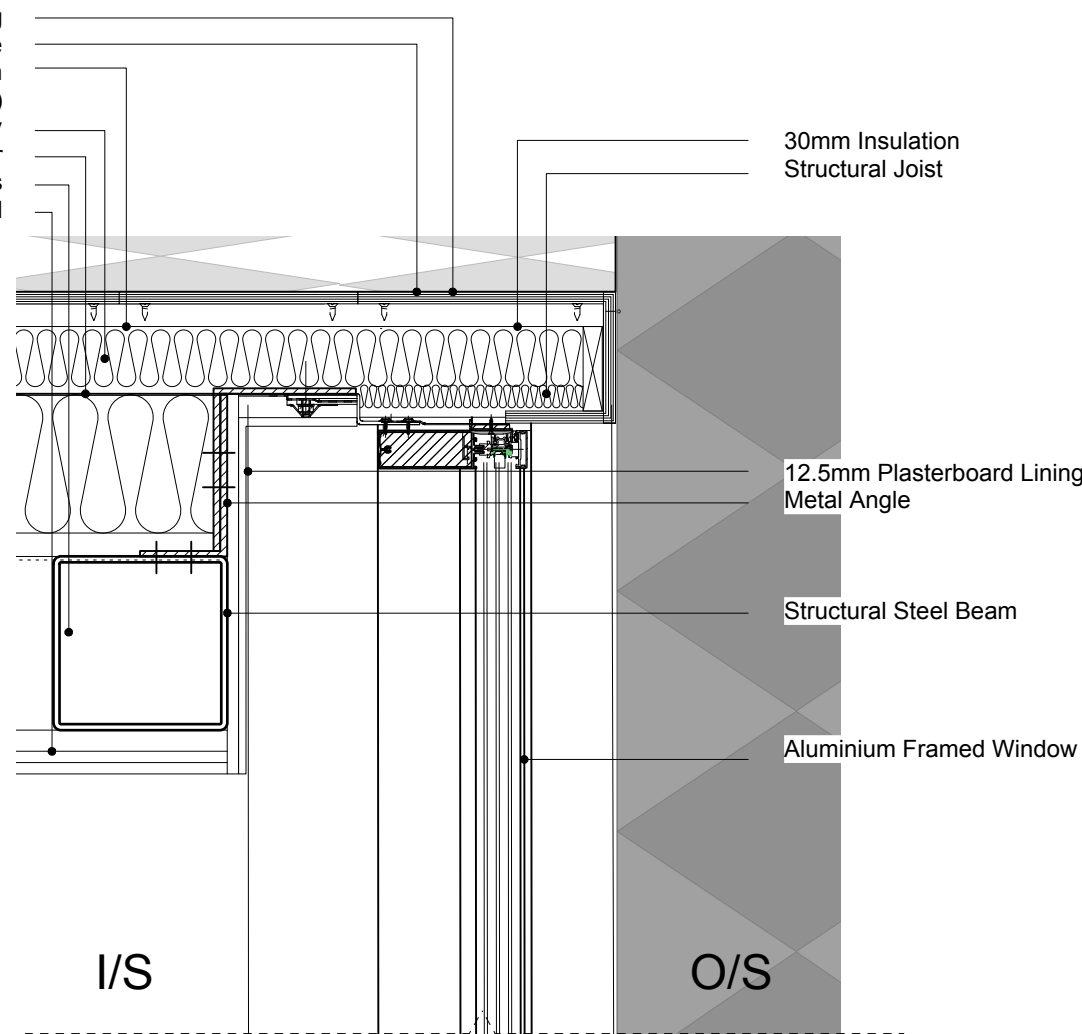
FCL +64.545

+0 FFL +60.120 TOS +60.020

FCL +59.720

-0 FFL +56.600

Oxidised Stainless Steel Roofing
30mm Carrier Frame
65mm Kalzip Seam
180mm Insulation (within Kalzip Roof System)
Kalzip Line Tray
Kalzip Vapour Control Layer
230mm Z Purlins
2no. 12.5mm Gypsum Board



3 SECTION - 1:10

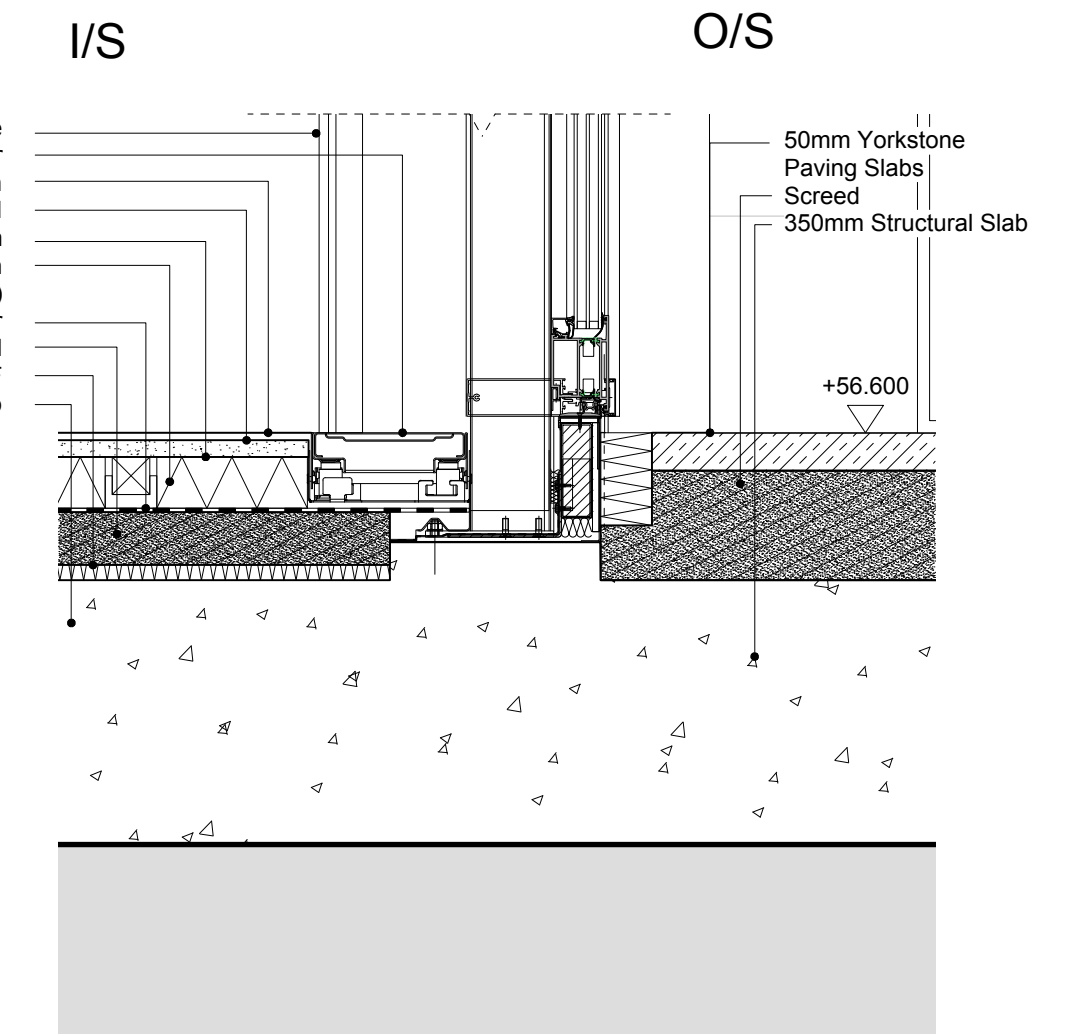
Fair Face Reinforced Concrete Wall
10mm Floor Finish
22mm Aquapanel T&G Cement Board
Instacoustic Cradle and Batten System
63mm minimum void for insulation
and UFH Pipes (for underfloor heating)
25mm Plywood
Raised Flooring System
(50mm Clear M+E Zone within the corridor)

250mm Fair Faced Reinforced
Concrete Wall
2no. 40mm Kingspan Therma K8 Insulation
Breather Membrane
50mm Cavity
75mm Stone
300mm Structural Slab

Aluminium Framed Window

4 SECTION - 1:10

Aluminium Window Frame
Trench Convector
10mm Floor Finish
22mm Aquapanel T&G Cement Board
Instacoustic Cradle and Batten System
63mm minimum void for insulation
and UFH Pipes (for underfloor heating)
Vapour Control Layer
75mm Screed
20mm Hydroduct CF
350mm Structural Slab



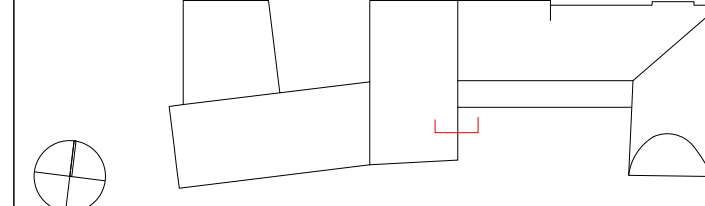
5 SECTION - 1:10

0 1 2 3

Revision	Date	Notes
A	08/01/13	Ground Floor level amended
B	15/02/13	Amended to draft planning submission.
C	18/03/13	Detailed Planning Submission
D	25/03/13	Detailed Planning Submission

Notes

Key Plan



1. Do not scale drawings. All dimensions to be checked on site. Errors to be reported to architect. To be read in conjunction with all relevant architects services and engineers drawings.
2. Contractors, sub-contractors and suppliers to verify any critical dimensions on site prior to fabrication of any building element. Any discrepancies to be reported to the architect.
3. This drawing to be read in conjunction with all relevant specifications, engineers and specialists consultants information and any discrepancies reported prior to installation.

ABA
Allison Brooke Architects Ltd
Studio 610, Highgate Studios, 53/79 Highgate Road, London N15 1TL
T 0207 267 9777 F 0207 267 9772 E info@allisonbrookearchitects.com

Project : EXETER COLLEGE WALTON STREET QUAD
Title : PROPOSED DETAILED SECTION 12
Client : EXETER COLLEGE
Scale : A3 - 1:100 : A1 - 1:50
Date : 25.03.13
Drawing : 2344_A404