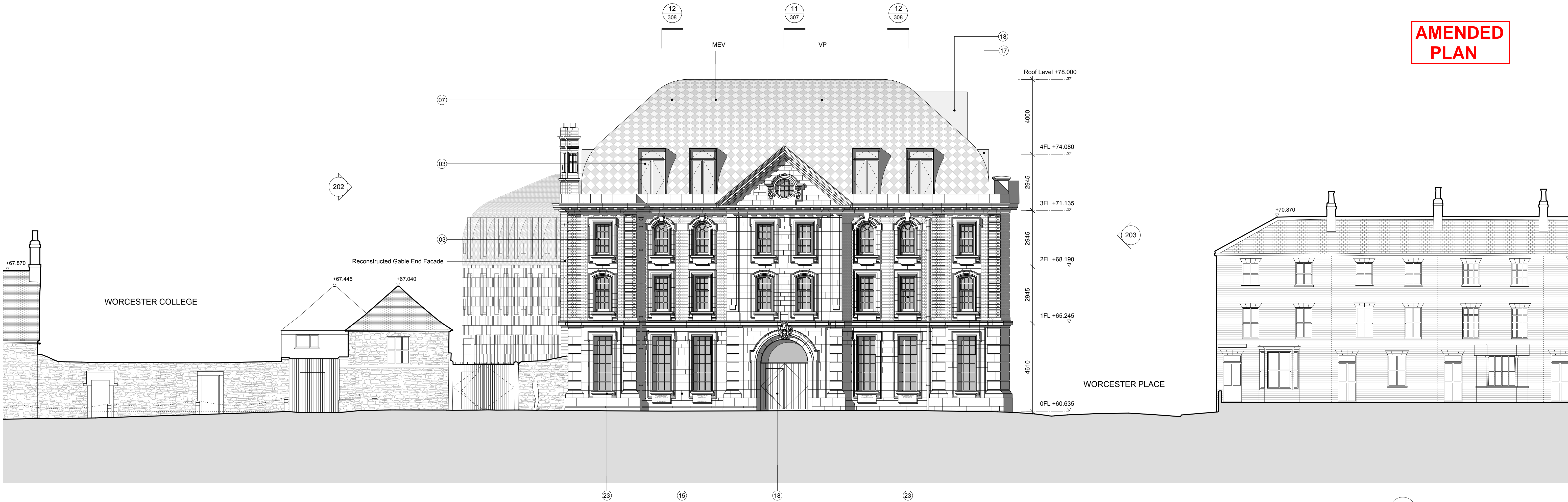
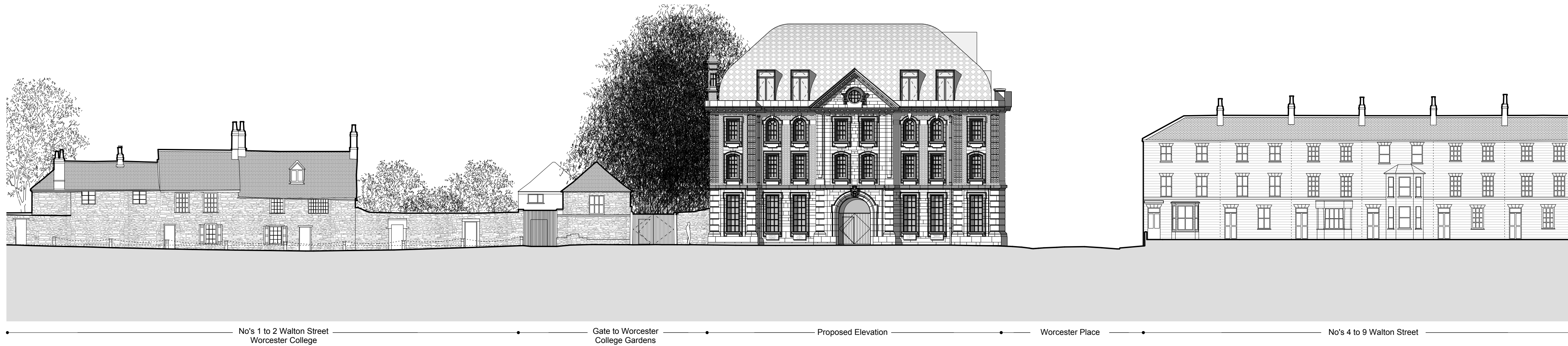


AMENDED
PLAN



1 WALTON STREET ELEVATION



2 WALTON STREET ELEVATION 1:200

0			1			2			5													
Revision	Date	Notes	Notes								Key Plan		1. Do not scale drawings. All dimensions to be checked on site. Errors to be reported to architect. To be read in conjunction with all relevant architects services and engineers drawings.				A3 - 1:200 : A1 - 1:100		Project : EXETER COLLEGE WALTON STREET QUAD			
A	30/11/12	Stage D GA Elevations	1. Bath Stone 2. Brick 3. Composite Double Glazed Windows with 200mm Reveals 4. Inward Opening Casement Window 5. Anodized Aluminium Clippings 6. Anodized Aluminium Gutter Detail 7. Rimex Stainless Steel Roof Tiles 8. Anodized Aluminium Perforated Panel								9. Anodized Aluminium Panel 10. Steel Window System with Door 11. Anodized Aluminium Framed Glazing 12. Anodized Aluminium Framed Glazed Door 13. Metal Gate 14. Recessed Solar Thermal Array Panels 15. Existing Retained Facade 16. Oak Gate with inset Door 17. Anodized Aluminium Cladding		18. Glazed Dormer 19. Glass Balustrade 20. Frameless Glazing 21. Cycle Storage 22. Bronze Anodized Composite Casement Windows 23. Replacement Crittall Window 24. Replacement Timber Sash		2. Contractors, sub-contractors and suppliers to verify any critical dimensions on site prior to fabrication of any building element. Any discrepancies to be reported to the architect. 3. This drawing to be read in conjunction with all relevant specifications, engineers and specialists consultants information and any discrepancies reported prior to installation.				A3 - 1:200 : A1 - 1:100		Project : EXETER COLLEGE WALTON STREET QUAD	
B	14/12/12	Two Bottom Windows Added and All Windows Amended to have Panes. Sills lowered on 4 windows on Ruskin Building.																	Client : EXETER COLLEGE			
C	15/02/13	Amended to draft planning submission.																	Scale : A3 - 1:200 : A1 - 1:100			
D	18/03/13	Detailed Planning Submission																	Date : 19.07.13			
E	19/07/13	Detailed Planning Submission Admndments																	Drawing : 2344_201			