

# MPE CDT



Imperial College  
London



## Centre for Doctoral Training

Director: Prof Dan Crisan (Imperial College London)  
Deputy Director: Prof Beatrice Pelloni (University of Reading)  
I am: Dr Hilary Weller, admissions tutor, University of Reading

# MPE CDT

A joint Centre for Doctoral Training between Imperial College London and the University of Reading, bringing together:

- ▶ Two great mathematics departments
- ▶ The awesome meteorology department at Reading
- ▶ The Grantham Institute for Climate Change at Imperial

# MPE CDT

A joint Centre for Doctoral Training between Imperial College London and the University of Reading, bringing together:

- ▶ Two great mathematics departments
- ▶ The awesome meteorology department at Reading
- ▶ The Grantham Institute for Climate Change at Imperial

[Some of our External Partners:](#)

# MPE CDT

A joint Centre for Doctoral Training between Imperial College London and the University of Reading, bringing together:

- ▶ Two great mathematics departments
- ▶ The awesome meteorology department at Reading
- ▶ The Grantham Institute for Climate Change at Imperial

## Some of our External Partners:

- ▶ Met Office
- ▶ European Centre for Medium Range Weather Forecasts
- ▶ National Centre for Earth Observation
- ▶ University of Hamburg
- ▶ Max-Planck Institut für Meteorologie
- ▶ Climate-KIC
- ▶ Willis re-insurance
- ▶ SSE (Renewable energy company)
- ▶ EDF Energy
- ▶ RES, Alstom Ocean Energy and MeyGen

# MPE CDT

A joint Centre for Doctoral Training between Imperial College London and the University of Reading, bringing together:

- ▶ Two great mathematics departments
- ▶ The awesome meteorology department at Reading
- ▶ The Grantham Institute for Climate Change at Imperial

## Some of our External Partners:

- ▶ Met Office
  - ▶ European Centre for Medium Range Weather Forecasts
  - ▶ National Centre for Earth Observation
  - ▶ University of Hamburg
  - ▶ Max-Planck Institut für Meteorologie
  - ▶ Climate-KIC
  - ▶ Willis re-insurance
  - ▶ SSE (Renewable energy company)
  - ▶ EDF Energy
  - ▶ RES, Alstom Ocean Energy and MeyGen
- ▶ 16 fully funded MRes+PhD positions available to start Sept 2015

# Areas of Activity

- ▶ Partial Differential Equations (deterministic and stochastic)
- ▶ Dynamical systems
- ▶ Numerical modelling and computations
- ▶ Fluid dynamics
- ▶ Data and inference
- ▶ Applications to earth systems, particularly weather/ocean/climate

# Relevant Experience

- ▶ Undergraduate or master's degree in mathematics or a closely related subject such as physics

Useful experience: some but not all of:

# Relevant Experience

- ▶ Undergraduate or master's degree in mathematics or a closely related subject such as physics

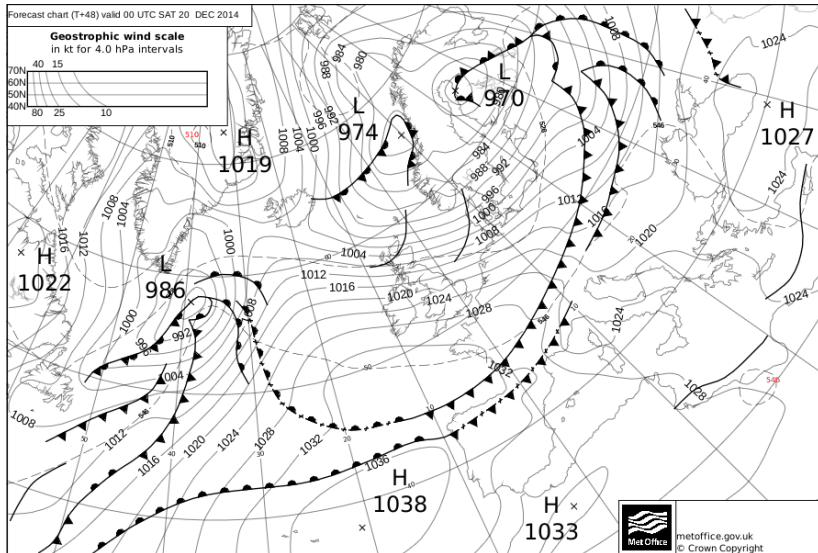
**Useful experience:** some but not all of:

- ▶ Mathematical methods
- ▶ Fluid dynamics
- ▶ Probability and statistics
- ▶ Dynamical systems
- ▶ Functional Analysis
- ▶ Numerical Analysis
- ▶ Computer programming
- ▶ Partial Differential Equations

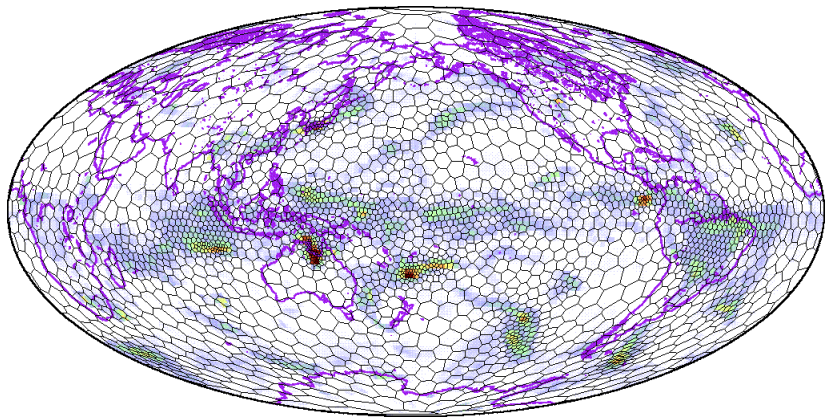


# Possible PhD Topics

# Calculus of Variations for Weather Forecasting



# Adaptive mesh modelling of the atmosphere



# Moving meshes for predicting evolution of ice-sheets



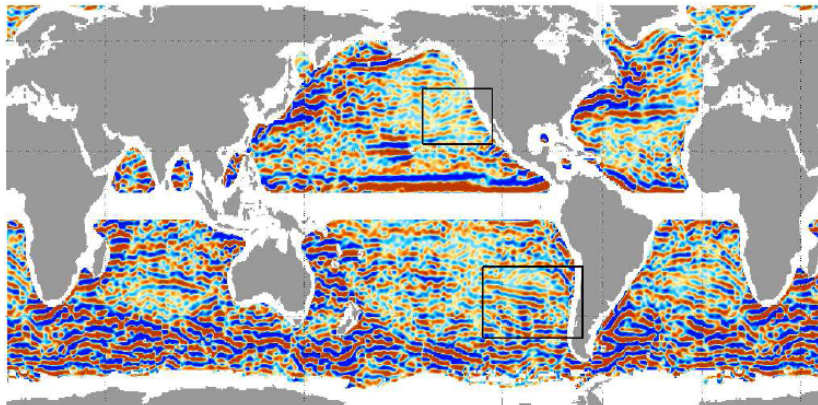
# Scattering of solar radiation by ice crystals



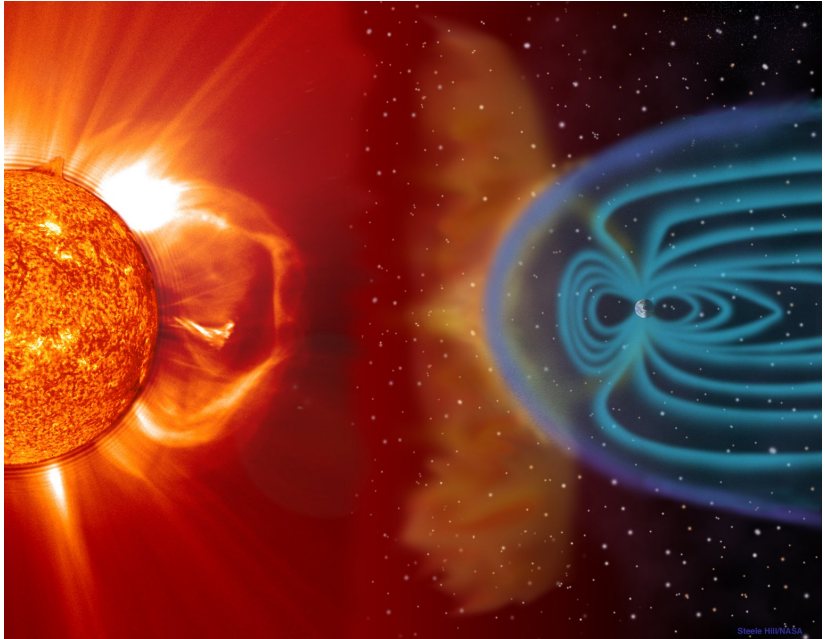
# Predicting air quality in the turbulent urban boundary layer



# Predicting Turbulent Jets in the Ocean

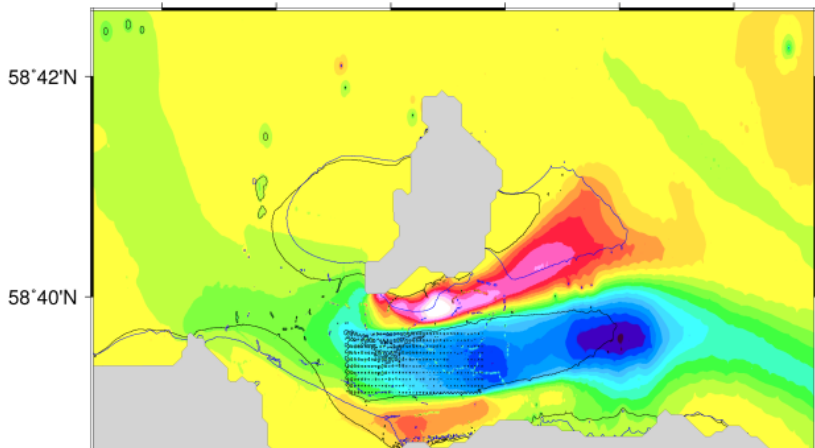


# Predicting Space Weather





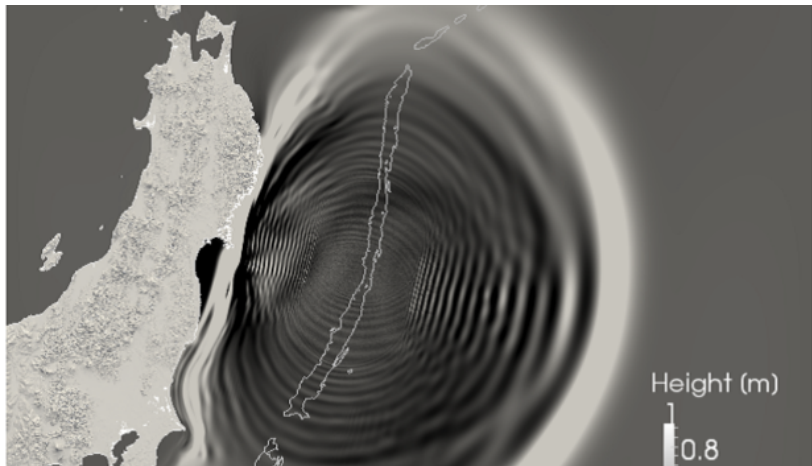
# Optimising Power Generation from Tidal Turbine Arrays



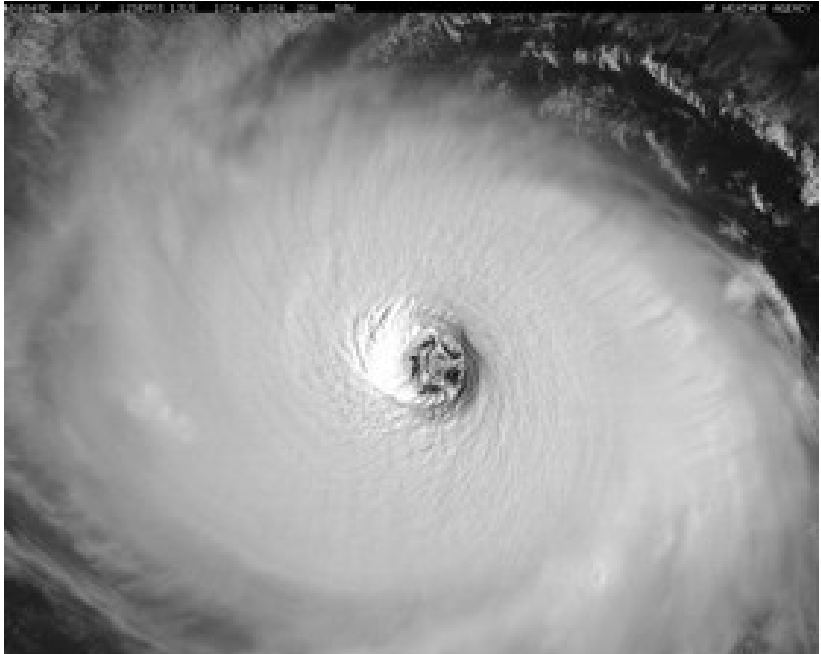
# Predicting Energy Generation by Wind Turbines



# Predicting Tsunamis



# Hurricanes and Climate Change



# Structure of PhD Programme

- ▶ Kick-off camp in September - invited seminars, group project, training

# Structure of PhD Programme

- ▶ Kick-off camp in September - invited seminars, group project, training
- ▶ MPE Wednesday
  - ▶ Students and staff meet for seminar, training and networking

# Structure of PhD Programme

- ▶ Kick-off camp in September - invited seminars, group project, training
- ▶ MPE Wednesday
  - ▶ Students and staff meet for seminar, training and networking

Year 1: MRes Joint between Reading and Imperial

# Structure of PhD Programme

- ▶ Kick-off camp in September - invited seminars, group project, training
- ▶ MPE Wednesday
  - ▶ Students and staff meet for seminar, training and networking

## Year 1: MRes Joint between Reading and Imperial

- ▶ Term 1, core courses
  - ▶ Partial Differential Equations
  - ▶ Data and uncertainty
  - ▶ Dynamical systems



# Structure of PhD Programme

- ▶ Kick-off camp in September - invited seminars, group project, training
- ▶ MPE Wednesday
  - ▶ Students and staff meet for seminar, training and networking

## Year 1: MRes Joint between Reading and Imperial

- ▶ Term 1, core courses
  - ▶ Partial Differential Equations
  - ▶ Data and uncertainty
  - ▶ Dynamical systems
- ▶ Term 2, huge range of elective courses
  - ▶ Mathematics courses from Reading and Imperial
  - ▶ Meteorology courses from Reading

# Structure of PhD Programme

- ▶ Kick-off camp in September - invited seminars, group project, training
- ▶ MPE Wednesday
  - ▶ Students and staff meet for seminar, training and networking

## Year 1: MRes Joint between Reading and Imperial

- ▶ Term 1, core courses
  - ▶ Partial Differential Equations
  - ▶ Data and uncertainty
  - ▶ Dynamical systems
- ▶ Term 2, huge range of elective courses
  - ▶ Mathematics courses from Reading and Imperial
  - ▶ Meteorology courses from Reading
- ▶ Literature Project
- ▶ MRes Research Project

# Structure of PhD Programme

- ▶ Kick-off camp in September - invited seminars, group project, training
- ▶ MPE Wednesday
  - ▶ Students and staff meet for seminar, training and networking

## Year 1: MRes Joint between Reading and Imperial

- ▶ Term 1, core courses
    - ▶ Partial Differential Equations
    - ▶ Data and uncertainty
    - ▶ Dynamical systems
  - ▶ Term 2, huge range of elective courses
    - ▶ Mathematics courses from Reading and Imperial
    - ▶ Meteorology courses from Reading
  - ▶ Literature Project
  - ▶ MRes Research Project
- ## Years 2-4: PhD at Reading or Imperial
- ▶ Topic chosen during year 1

# Structure of PhD Programme

- ▶ Kick-off camp in September - invited seminars, group project, training
- ▶ MPE Wednesday
  - ▶ Students and staff meet for seminar, training and networking

## Year 1: MRes Joint between Reading and Imperial

- ▶ Term 1, core courses
  - ▶ Partial Differential Equations
  - ▶ Data and uncertainty
  - ▶ Dynamical systems
- ▶ Term 2, huge range of elective courses
  - ▶ Mathematics courses from Reading and Imperial
  - ▶ Meteorology courses from Reading
- ▶ Literature Project
- ▶ MRes Research Project

## Years 2-4: PhD at Reading or Imperial

- ▶ Topic chosen during year 1
- ▶ Annual MPE CDT convention (Jamboree)
- ▶ Management course
- ▶ Met Office Summer School
- ▶ Internships and international placements
- ▶ Modelling week

# Apply

- ▶ 16 fully funded MRes+PhD positions available to start Sept 2015
- ▶ See [mpecdt.org/](http://mpecdt.org/) for application details
- ▶ Apply before 17 January 2015
- ▶ No need to contact potential supervisors in advance