



1 CROSS SECTION THROUGH SOUTH QUAD  
1:50

Rimex Cladding

Oxidised Stainless Steel Roofing  
30mm Carrier Frame  
65mm Kalzip Seam  
180mm Insulation (within Kalzip Roof System)  
Kalzip Vapour Control Layer  
230mm Z Purlins  
2no. 12.5mm Gypsum Board

Aluminium Framed Window

Aluminium Framed Windows  
to Fellow's Studies

10mm Floor Finish  
22mm Aquapanel T&G Cement Board  
Instacoustic Cradle and Batten System  
63mm minimum void for insulation  
and UFH Pipes (for underfloor heating)  
300mm Structural Slab

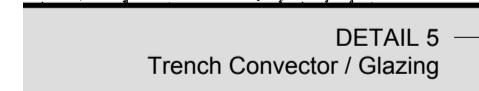
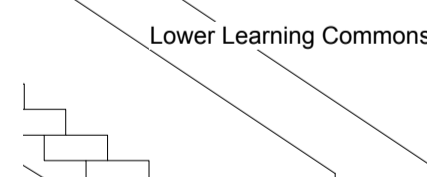
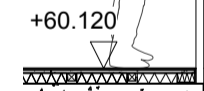
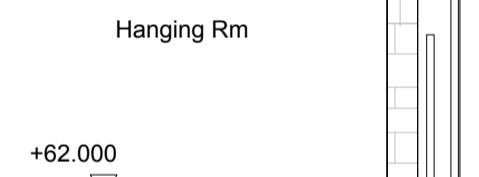
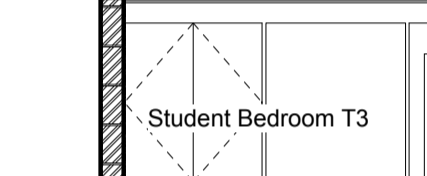
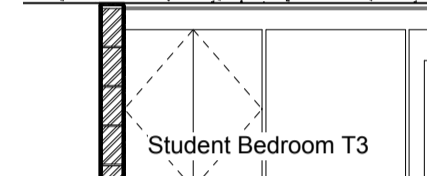
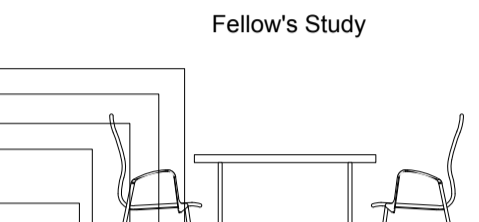
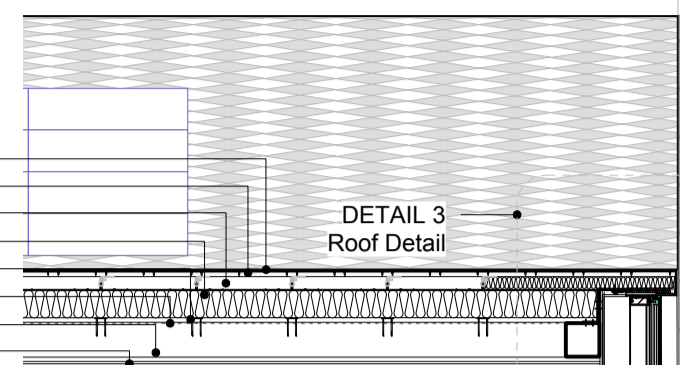
Composite Framed Windows  
to Family Kitchens

Bath Stone

Gutter

South Quad  
Cloister

Lower Learning Commons



2 SECTION THROUGH LEARNING COMMONS AND SOUTH QUAD  
1:50

Roof Level +77.875

4th FFL +74.000 TOS +73.900

FCL +73.625

3rd FFL +71.075 TOS +70.975

FCL +70.700

2nd FFL +68.150 TOS +68.050

FCL +67.775

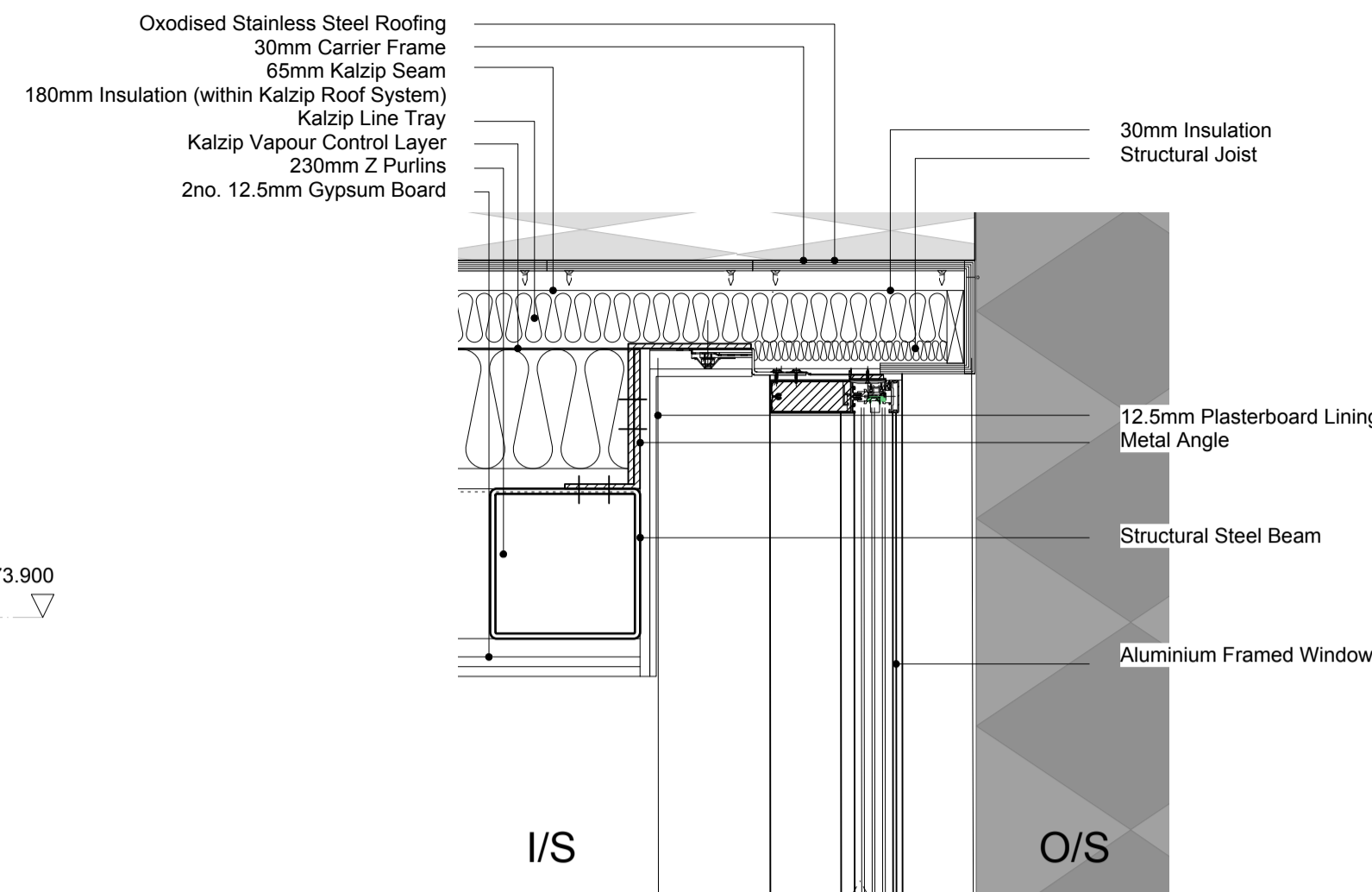
1st FFL +65.225 TOS +64.820

FCL +64.545

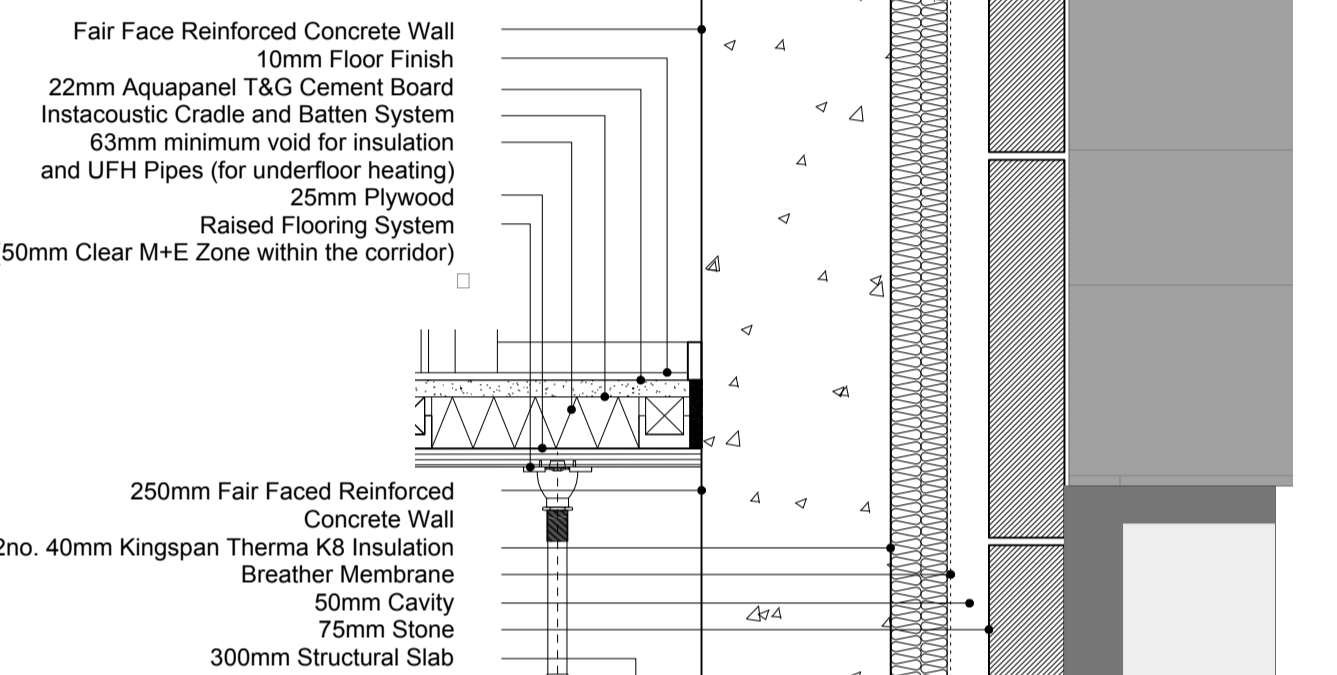
+0 FFL +60.120 TOS +60.020

FCL +59.720

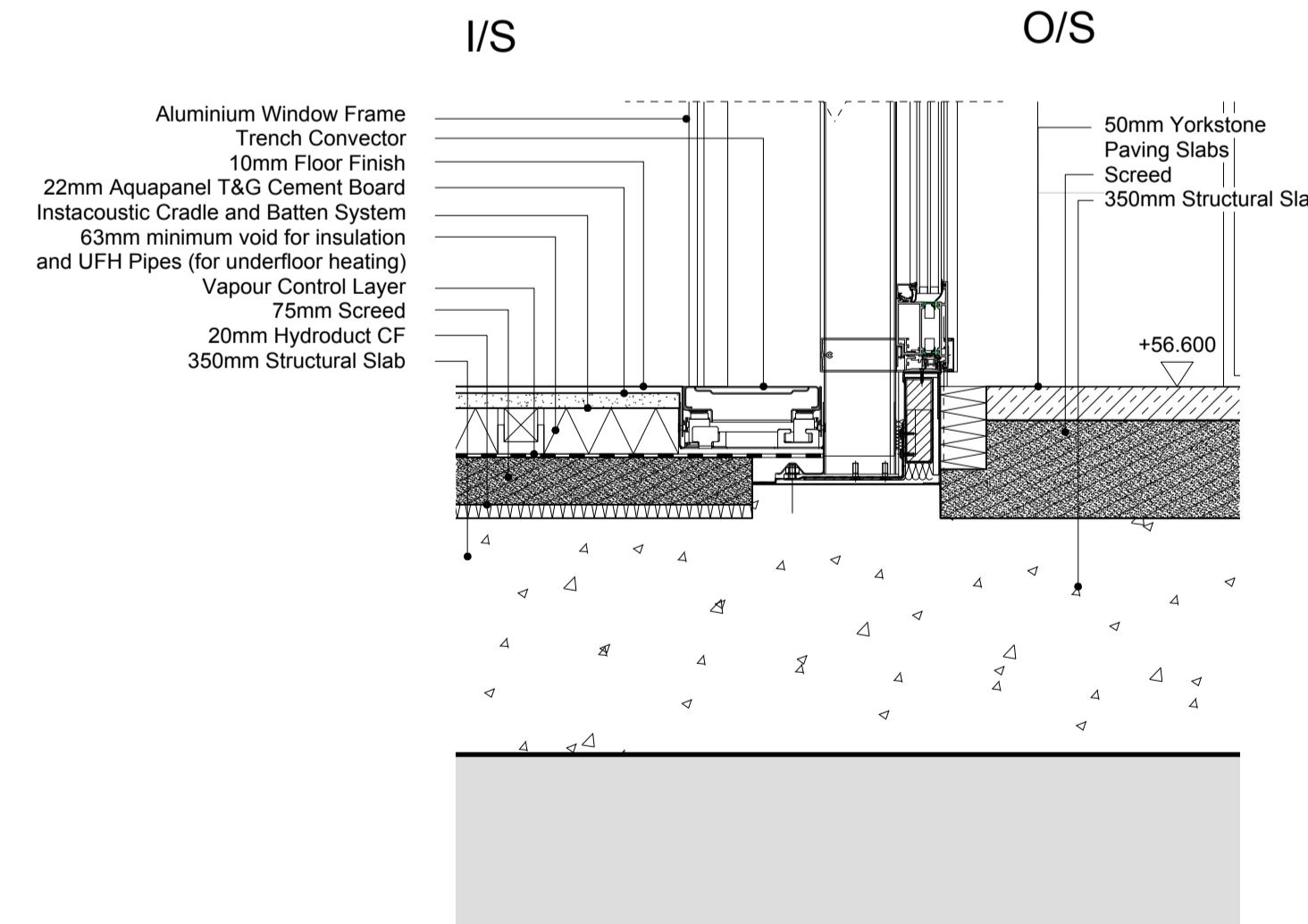
-0 FFL +56.600



3 SECTION - 1:10



4 SECTION - 1:10



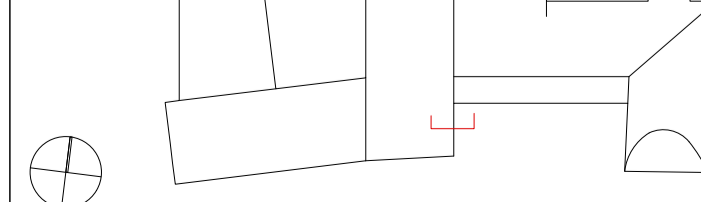
5 SECTION - 1:10

0 1 2 3

Revision	Date	Notes
A	08/01/13	Ground Floor level amended
B	15/02/13	Amended to draft planning submission.
C	18/03/13	Detailed Planning Submission
D	25/03/13	Detailed Planning Submission

Notes

Key Plan



1. Do not scale drawings. All dimensions to be checked on site. Errors to be reported to architect. To be read in conjunction with all relevant architects services and engineers drawings.
2. Contractors, sub-contractors and suppliers to verify any critical dimensions on site prior to fabrication of any building element. Any discrepancies to be reported to the architect.
3. This drawing to be read in conjunction with all relevant specifications, engineers and specialists consultants information and any discrepancies reported prior to installation.

**ABA**  
Allison Brooke Architects Ltd  
Studio 610, Highgate Studios, 53/79 Highgate Road, London N15 1TL  
T 0207 267 9777 F 0207 267 9772 E info@allisonbrookearchitects.com

Project	: EXETER COLLEGE WALTON STREET QUAD
Title	: PROPOSED DETAILED SECTION 12
Client	: EXETER COLLEGE
Scale	: A3 - 1:100 : A1 - 1:50
Date	: 25.03.13
Drawing	: 2344_A404